

The image features a modern, multi-story building with a glass and metal facade, partially obscured by a dark green overlay. The Lundbeck Foundation logo, a stylized 'LF' monogram, is positioned to the left of the text. The text 'LUNDBECK FOUNDATION' is written in a bold, white, sans-serif font, centered horizontally across the middle of the image.

**LF LUNDBECK
FOUNDATION**

v. Lene Skole, CEO

Setting the scene: Denmark has many foundations, which differ widely in purpose, objectives, governance etc....;

Entreprise Foundations (Erhvervsdrivende fonde)



Charity/Non-profit Foundations (Almennyttige fonde)



Private Equity and Venture Funds (Kapital- og venturefonde)



NGO's (ikke-statslige/civilsamfundsorganisationer)



Sovereign Investment Funds (Statslige fonde)



Funds-like Associations (Fondslignende foreninger)



What does the Lundbeck Foundation do?



Long-term business owner

Through Strategic Ownerships, we own healthcare businesses with a long-term perspective, with an ambition to build global leaders in healthcare



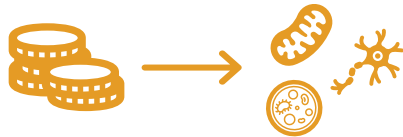
Stabilizing financial returns

Through Invest, we manage our financial assets to ensure our ability to consistently support our ownerships and grant allocation activities, even during crises



Giving back to society

Through Grants & Prizes, we distribute a sizable part of our profits to research, benefitting society through new, improved treatments for brain diseases



Biotech investor

Through Lundbeckfonden BioCapital, we create and invest in biotech companies, commercialize Danish research and support financial growth



Active public voice

Through Corporate Affairs, we promote a scientific, fact-based understanding of 1) brain health 2) research conditions in DK and 3) commercial foundations

The Lundbeck Foundation at a glance: A broad range of activities under one roof

Strategic ownerships



Grants & Prices

550 DKKm

Approx. 78% for neuroscience
652 FTEs funded

BioCapital

20 Biotech companies

BioCapital has an investment mandate of up to DKK 4bn and a focus on creating and investing in Danish biotech companies

Invest

22,278

Market value (DKKm)

Invest generated a loss of DKK 1,430m, corresponding to a return of -5.9%

REVENUE (DKKm)

35,426

OPERATING PROFIT (DKKm)

3,427

PROFIT FOR THE YEAR (DKKm)

1,211

EQUITY (DKKm)

50,164



*) The Lundbeck Foundation's investment in Ellab is currently subject to relevant regulatory approvals

Our purpose helps us to navigate

**“To create powerful ripple effects that
bring discoveries to lives through
investing actively in business and science
at the frontiers of their fields”**

