

Employment and Wage Insurance within Firms: Worldwide Evidence

Finance Working Paper N° 517/2017

September 2017

Andrew Ellul

Indiana University, CEPR, ECGI, University of
Naples Federico II and CSEF

Marco Pagano

University of Naples Federico II, CSEF, EIEF,
CEPR and ECGI

Fabiano Schivardi

EIEF, Luiss Guido Carli, Bocconi University and
CEPR

©Andrew Ellul, Marco Pagano and Fabiano
Schivardi 2017. All rights reserved. Short sections
of text, not to exceed two paragraphs, may be quoted
without explicit permission provided that full credit,
including © notice, is given to the source.

This paper can be downloaded without charge from:
http://ssrn.com/abstract_id=2469461

www.ecgi.org/wp

ECGI Working Paper Series in Finance

Employment and Wage Insurance within Firms: Worldwide Evidence

Working Paper N° 517/2017

September 2017

Andrew Ellul
Marco Pagano
Fabiano Schivardi

We are grateful to the Editor (Francesca Cornelli), two anonymous referees, Ernst Maug, Tarun Ramadorai, David Sraer and Oren Sussman for insightful remarks and suggestions. Useful comments were also provided by Alon Brav, Yaniv Grinstein, Nandini Gupta, Beni Lauterbach, Amir Licht, David Matsa, Colin Mayer, Arzu Ozoguz, Merih Sevilir, David Thesmar, Vikrant Vig, Yishay Yafeh, David Yermack, and participants at the 2012 Ackerman Conference on Corporate Governance (Bar-Ilan University), the 2014 AFA Annual Meeting, CSEF 1st Conference on Finance and Labor, the 2015 European Finance Association Annual Meeting (Vienna), the Hebrew University Finance Conference, the 21st Mitsui Finance Symposium on Labor and Finance, the 2014 SITE conference on Interrelations between Financial and Labor Markets, the 2015 FIRS Annual Meeting, and at seminars at Cass Business School, Chinese University of Hong Kong, HEC Paris, Hong Kong University of Science and Technology, Indiana University, Queen Mary College, Universidade Catolica Portuguesa, University of Oxford, Università della Svizzera Italiana (USI), and University of Houston. This research has been sponsored by grants from the ERC (FINLAB project no. 295709), the Italian Ministry for University and Research, and the Sardinia Region (Law 7 CUP F71J09000300002).

©Andrew Ellul, Marco Pagano and Fabiano Schivardi 2017. All rights reserved. Short sections of text, not to exceed two paragraphs, may be quoted without explicit permission provided that full credit, including © notice, is given to the source.

Abstract

If unemployment insurance is more generous, workers should demand less implicit insurance from their employers: firm- and government-provided insurance should be substitutes. Using a firm-level international panel dataset, we investigate this hypothesis exploiting cross-country and time-series variation in public unemployment insurance as a shifter of workers' demand for insurance within firms, and family vs. non-family ownership as a shifter of firms' supply of insurance. We find that employment stability in family firms is greater, and the wage discount larger, in countries with more generous public unemployment insurance, while no such substitutability is present for non-family firms.

Keywords: risk-sharing, insurance, social security, unemployment, wages, family firms

JEL Classifications: G31, G32, G38, H25, H26, M40

Andrew Ellul*

Professor of Finance

Indiana University, Kelley School of Business, Department of Finance
1309 E. 10th St.

Bloomington, IN 47405, United States

phone: +1 812 855 276 8

e-mail: anellul@indiana.edu

Marco Pagano

Professor of Economics

University of Naples Federico II, Department of Economics and Statistics IVia
Cintia - Monte S. Angelo

Napoli, 80126, Italy

phone: +39 081 675306, fax: +39 081 7663540

e-mail: mrpagano@tin.it

Fabiano Schivardi

Professor of Economics

Luiss Guido Carli, Department of Economics and Finance

Viale Romania 32

Rome, Rome 00187, Italy

e-mail: fschivardi@luiss.it

*Corresponding Author

Employment and Wage Insurance within Firms: Worldwide Evidence

Andrew Ellul

Kelley School of Business, Indiana University, CSEF and ECGI

Marco Pagano

University of Naples Federico II, CSEF, EIEF, CEPR and ECGI

Fabiano Schivardi

LUISS, EIEF and CEPR

16 February 2017

Abstract

If unemployment insurance is more generous, workers should demand less implicit insurance from their employers: firm- and government-provided insurance should be substitutes. Using a firm-level international panel dataset, we investigate this hypothesis exploiting cross-country and time-series variation in public unemployment insurance as a shifter of workers' demand for insurance within firms, and family vs. non-family ownership as a shifter of firms' supply of insurance. We find that employment stability in family firms is greater, and the wage discount larger, in countries with more generous public unemployment insurance, while no such substitutability is present for non-family firms.

JEL classification: G31, G32, G38, H25, H26, M40.

Keywords: risk-sharing, insurance, social security, unemployment, wages, family firms.

Acknowledgements: We are grateful to the Editor (Francesca Cornelli), two anonymous referees, Ernst Maug, Tarun Ramadorai, David Sraer and Oren Sussman for insightful remarks and suggestions. Useful comments were also provided by Alon Brav, Yaniv Grinstein, Nandini Gupta, Beni Lauterbach, Amir Licht, David Matsa, Colin Mayer, Arzu Ozoguz, Merih Sevilir, David Thesmar, Vikrant Vig, Yishay Yafeh, David Yermack, and participants at the 2012 Ackerman Conference on Corporate Governance (Bar-Ilan University), the 2014 AFA Annual Meeting, CSEF 1st Conference on Finance and Labor, the 2015 European Finance Association Annual Meeting (Vienna), the Hebrew University Finance Conference, the 21st Mitsui Finance Symposium on Labor and Finance, the 2014 SITE conference on Interrelations between Financial and Labor Markets, the 2015 FIRS Annual Meeting, and at seminars at Cass Business School, Chinese University of Hong Kong, HEC Paris, Hong Kong University of Science and Technology, Indiana University, Queen Mary College, Universidade Catolica Portuguesa, University of Oxford, Università della Svizzera Italiana (USI), and University of Houston. This research has been sponsored by grants from the ERC (FINLAB project no. 295709), the Italian Ministry for University and Research, and the Sardinia Region (Law 7 CUP F71J09000300002).

Unemployment risk imposes considerable welfare losses on workers (Low, Meghir and Pistaferri, 2010). Displaced workers experience earnings losses, not only while unemployed but also upon reentry (Jacobson, LaLonde and Sullivan, 1993), due to both general skill depreciation and loss of match-specific human capital. In unemployment spells, households cut back on expenditures (Gruber, 1997; Browning and Crossley, 2001) even when their income drop is temporary, if they face borrowing constraints and hold illiquid durables (Browning and Crossley, 2009). These risks are hard to insure through standard market mechanisms, owing to moral hazard. To address this market failure, in most countries layoffs are partially insured by public unemployment insurance systems,¹ which provide significant consumption smoothing benefits to unemployed workers (Gruber, 1997) and reduce both unemployment risk and the compensating wage differentials associated with such risk (Topel and Welch, 1980; Topel, 1983, 1984).

In principle, there is an alternative insurance provider: the firm. Generally speaking, a firm is better positioned to detect its employees' opportunistic behavior than a market-based insurance provider. At the same time, it has greater risk-bearing capacity than its employees. This idea dates back at least to Knight (1921): "The system under which the confident and venturesome assume the risk and insure the doubtful and timid by guaranteeing to the latter a specified income in return for an assignment of the actual results ... is the enterprise and wage system of industry" (p. 269-70). It was formalized in the implicit contract model of Baily (1974) and Azariadis (1975), where risk-neutral entrepreneurs insure risk-averse workers by insulating their salaries and (under more restrictive conditions) employment from adverse shocks to production, in exchange for a lower average salary. In fact, entrepreneurs' risk-absorption capacity needs not be rooted in their preferences but in differential access to capital markets: if they can diversify idiosyncratic risk better than workers, they behave "as if" they were less risk-averse, and thus insure workers (Berk and Walden 2013).

Ironically, such risk-sharing arrangements can break down because of moral hazard and limited commitment on the side of *firms*, rather than *employees*: firms must be trusted to honor their promises in the event of a bad shock, as assumed by implicit contract

¹ The first unemployment benefit scheme was introduced in the UK in 1911, followed by Germany in 1927. In response to the great depression, the US federal government passed the Social Security Act of 1935, which encouraged the states to set up unemployment insurance programs. The process spread out to the other advanced economies during the expansion phase of the welfare state following the second world war.

theories. A recent empirical literature, surveyed below, highlights that family ownership might be particularly suited to address this commitment problem, by establishing an identity between the firm and the household that controls it: family firms are less likely than non-family ones to breach implicit contracts because the reputation of the controlling family is at stake. Long-term ownership and control, possibly over generations, enable them to win and retain the trust of their employees.² Their credibility is also buttressed by their resilience to hostile takeovers, and hence to unforeseen changes in control, as argued by Shleifer and Summers (1988).³ In the context of implicit contract theory, this “commitment hypothesis” implies that family firms can credibly offer more secure employment than non-family firms. In exchange for this security, they should be able to pay lower wages, effectively earning an “insurance premium”.

If indeed both governments and firms can provide insurance to workers, it is natural to expect them to substitute for each other: insofar as the social security system provides more insurance to workers, these should demand less insurance from firms. Yet, so far no research has investigated whether this substitutability is present in the data, and how strong it is. This is precisely our research question. To address it, we use both cross-country and time-series variation in government insurance programs as a shifter of workers’ *demand for insurance* within firms, and family vs. non-family ownership as a shifter of firms’ *supply of insurance*. We investigate whether firms stabilize employment more in countries and periods in which governments offer less insurance. We expect the negative relationship between government- and firm-provided insurance to emerge more forcefully among family firms: due to the lack of a credible commitment technology, non-family firm insurance provision should be less responsive to changes in public insurance. This leads naturally to a differences-in-differences empirical strategy, based on the interaction between family-firm status and social security provision, to investigate

² This specificity of family firms was recognized by President Obama in a 2012 speech: “The family business in Warroad, Minnesota, that didn’t lay off a single one of their four thousand employees during this recession, even when their competitors shut down dozens of plants, even when it meant the owners gave up some perks and pay ... understood their biggest asset was the community and the workers who helped build that business” (*Baltimore Sun*, “Obama’s full remarks”, 6 September 2012).

³ A firm’s implicit contracts with its employees lack credibility where control is contestable, because the firm may be taken over by an entrepreneur who is not bound by this commitment. Shleifer and Summers (1988) argue that a corporate raider may be attracted precisely by the potential short-run gain from breaching such contracts, such as by firing workers when sales diminish or cutting wages once employees’ investment in firm-specific human capital is sunk.

whether firms insurance and social security are substitutes and whether the degree of substitutability differs between family and non-family firms.

Our tests rely on a firm-level panel comprising 7,822 firms in 41 countries from 1988 to 2013. We estimate the degree to which firms' shocks are passed over to employment: the lower the pass-through, the higher the insurance provided. We measure shocks as fluctuations in industry-level sales or as the unanticipated component of the change in firm-level sales. These two different measures of shocks capture different aspects of firms' insurance provision to their employees, and each has its own merits and shortcomings, as explained in Section 2. Since insurance obviously matters for adverse shocks, we also repeat the estimation separately for negative realizations of sales shocks. Moreover, since firms should be better positioned to insure their employees against transient shocks than against persistent ones, we also assess employment insurance in response to each of these two types of shocks.

Our diff-in-diff methodology assesses the relationship between employment insurance provided by firms and by governments exploiting both cross-country differences in social security arrangements and within-country changes due to social security reforms. We measure public insurance with the income replacement rate, that is, the ratio of unemployment benefits to previous salary. Replacement rates differ widely not only across countries (from zero to more than 50%), but also over time, due to reforms of national social security systems.

Our key finding is that indeed firm- and government-provided insurance are substitutes: when governments step up the provision of unemployment insurance by increasing the replacement rate, family firms reduce the supply of insurance to their employees by increasing the pass-through of sales shocks, and vice versa. This does not apply however to non-family firms, which do not vary their provision of insurance significantly in either case. Family firms almost completely offset shocks when the social security replacement rate is zero, but the offset drops by approximately one third for a replacement rate of 50%. This substitutability between private and public unemployment insurance is present also when one focuses only on large and persistent changes in the replacement rate, emerges more clearly for negative shocks, and disappears for persistent shocks, which are more difficult to insure, as predicted by Gamber (1988).

A skeptical reader may suspect that our finding that family firms provide more stable employment than non-family ones, and the more so the less generous the public insurance system, is vitiated by endogenous selection of firms into family ownership, by unobserved heterogeneity between family and non-family firms, or by reverse causality from changes in employment to changes in the replacement rate. We address these concerns in a number of ways, exploiting both the cross-country and the time-series dimensions of our data.

First, we show that in our sample the fraction of family firms is uncorrelated with country-level institutional variables, except for the social security replacement rate and the degree of financial development, both of which are controlled for in our regressions. Moreover, it is uncorrelated even with these two variables when controlling for country fixed effects. Hence, regressions based only on within-country variation in the replacement rate are free from selection issues associated with cross-country differences. We also repeat the estimation on a sample of family firms matched with similar non-family firms in the same industry and country, and obtain results consistent with those found with the panel estimation on the full sample. Therefore, our findings cannot be explained by systematic differences in the observable characteristics of these two types of firms, including their different distribution across countries or sectors.

Second, one may worry that our results are driven by unobserved heterogeneity between family and non-family firms, as some country-level unobserved variable may be driving both the presence of family firms and the generosity of public unemployment insurance. We address this problem by including a full set of interactions between country dummies, the shocks and the family firm dummy, so as to effectively rely only on within-country variation to estimate the parameters of interest: this eliminates the impact of all constant country-level characteristics – whether observed or not – on the estimates. Even in this demanding specification, we still find that family firm insurance provision decreases with more generous public insurance provision, while non-family firm provision is unaffected. Also if our regressions are estimated separately on the two subsamples of family and non-family firms, we find that family firms mitigate more the impact of sales shocks when public unemployment insurance is less generous; instead, in the subsample of non-family firms employment stabilization does not respond significantly to public insurance.

Finally, we deal with possible reverse causality from employment growth to the replacement rate by including country-time effects in all our regressions: hence firm-level

employment changes – our dependent variable – are purged of all aggregate country-level variation, including changes related to the business-cycle.

We also study the wage implications of the substitutability between public- and firm-provided insurance. Implicit contract theory predicts that workers should be willing to pay an insurance premium by accepting a lower wage in exchange for the extra employment stability offered by family firms (Baily, 1974; Azariadis, 1975). Arguably, this willingness to pay should be inversely related to the extent of government provided insurance. This is exactly what we find in our data: controlling for country, industry and time effects, wages in family firms are 6 percent lower than in non-family firms when the government provides no insurance, and the difference decreases as the replacement rate becomes more generous. These results are to be taken with caution, being obtained on a considerably smaller sample than those regarding employment insurance, since in our dataset information about wage is missing for over 50% of the firms for which we have employment data.

When investigating if firms differ in their provision of wage insurance, we find that family firms actually provide *less* wage insurance than non-family firms. This result can be explained by another feature of employment relations in family firms: these are known to feature more “paternalistic” and less confrontational labor relations. Charles Heinz, vice-president of the Heinz company, once stated: “I think the fact that I’m in the Heinz family helps make for a better climate in labor negotiations” (Mueller and Philippon, 2011, p. 218). Our finding on wage insurance is consistent with this “renegotiation hypothesis” according to which greater trust in industrial relations enables family firms to provide job security in exchange for wage flexibility. Further, the data suggest that the unemployment insurance provided by the government does not affect the provision of wage insurance by firms, and by family firms in particular.

As a final exercise, we investigate the mechanisms through which family firms provide insurance. We document that they let their profits, dividends and cash reserves act as buffers that absorb the impact of sales shocks, especially adverse ones, much more than non-family firms. We also document that having access to financial markets is important for them to be able to provide insurance to their employees (Berk and Walden, 2014): during banking crises, family firms both provide less insurance than in normal times, and substitute less for public insurance. However, in recessions that are not concomitant with a banking crisis they still provide employment insurance, as in such recessions they

arguably retain access to finance. And, consistently with our main finding, in such recessions their insurance provision acts as a substitute for public provision.

The paper is organized as follows. Section 1 places our contribution in the context of the literature. Section 2 lays out the empirical methodology. Section 3 describes the data. Section 4 presents the results on employment insurance, Section 5 those on wage insurance, and Section 6 investigates whether employment stability is priced in real wages. Section 7 concludes.

1. Related Literature

Our study differs from most previous works on risk-sharing within firms, which focus on specific countries and accordingly cannot explore how differences in public unemployment insurance influence risk-sharing between firms and their employees.

A growing literature, mostly based on French data, shows that family firms differ from non-family ones in their employment policies. In French heir-managed firms, employment is less sensitive to industry-wide sales shocks, average wages are lower and profits higher than in other firms, as predicted by the implicit contract theory (Sraer and Thesmar, 2007; Bassanini et al., 2013). Family firms also feature lower layoff risk during dynastic CEO transitions (Bach and Serrano-Velarde, 2015). This greater employment stability appears to buy social peace: family firms face fewer strikes and less unionized workers, and inflict sanctions and undergo litigation less frequently (Mueller and Philippon, 2007).

Employment in family firms has also been found to respond differently to crises. In Italy, family firms reacted to the 2008 crisis by safeguarding more than non-family firms workplaces closer to the firm's headquarters (D'Aurizio and Romano, 2013). But evidence from Norway indicates that, though generally less likely to shut down, family firms may be less resilient in a severe banking crisis such as that of 2009 (Bryson, Dale-Olsen and Gulbrandsen, 2016). Both of these findings are consistent with our evidence.

The only cross-country study related to our work that we are aware of is Bennedsen et al. (2015), who investigate whether family firms have a comparative advantage owing to their ability to offer implicit contracts. Differently from us, they test whether family firms have higher return on assets in countries with less regulated labor markets, while we consider whether family firms provide employment insurance, and do so differently depending on public provision of insurance.

Kim, Maug and Schneider (2014) inquire whether risk-sharing within firms varies depending on workers' role in corporate governance. Using establishment-level panel data for German companies, they find that in firms with parity codetermination white-collar and skilled blue-collar workers are protected against layoffs and wage cuts, while unskilled workers are not. Only white collar workers pay for this benefit, with a 3 percent lower wage.

There is also evidence that firms' ability to access credit affects their ability to provide risk-sharing benefits, again consistently with our findings. Sharpe (1994) documents that in the United States employment responds more sharply to fluctuations in aggregate output in more leveraged firms. Caggese and Cuñat (2008) calibrate a dynamic model in which financially constrained firms tend to employ more temporary workers, who absorb a larger portion of overall employment volatility, than unconstrained firms. These predictions are confirmed by their empirical estimates for a panel of small and medium-sized Italian manufacturing firms.

Another strand of research investigates firms' wage insurance against temporary and permanent shocks: Guiso, Pistaferri and Schivardi (2005) show that the earnings of Italian workers are fully insured against transitory shocks to the firm's value added, and only partially insured against permanent shocks.⁴

2. Empirical methodology

Our main research question is whether the insurance implicitly provided by firms is a substitute for that provided by governments via the social security system. As theory suggests that family firms are better at committing to provide insurance to their employees, we test whether this substitutability between private and public insurance is stronger for family firms than for non-family ones. This section presents our empirical methodology, and discusses the identification issues that it involves and how we address them.

⁴ Broadly similar results are reported for Portugal by Cardoso and Portela (2009), for Hungary by Kátay (2016), and for Germany by Guertzgen (2013).

2.1 Specification

To quantify the insurance that firms offer to their employees, we estimate the elasticity of employment or wages to shocks in sales, namely the extent to which these shocks are allowed to “pass-through” to their employees: the larger the “pass-through coefficient”, the less insurance firms provide to their employees. Specifically, we test whether this pass-through coefficient varies depending on social security arrangements, which should affect the employees’ demand for insurance, and on firms’ family ownership status, which determines their ability to supply insurance. To assess the robustness of our results, we adopt different definitions of a “shock” in sales: in some specifications, it is the percentage change in the industry’s sales; in others, it is an idiosyncratic firm-level shock, measured as the unexpected component of the change in the firm’s sales. In yet other specifications, the change in sales is broken down into positive and negative, or transitory and persistent components.

Our methodology is best illustrated by the baseline specification of our employment regression:

$$\Delta n_{it} = \beta_1 \varepsilon_{it} + \beta_2 \varepsilon_{it} F_{it} + \beta_3 \varepsilon_{it} S_{ct} + \beta_4 \varepsilon_{it} F_{it} S_{ct} + \beta_5 F_{it} + \beta_6 F_{it} S_{ct} + \gamma' X_{it-1} + \mu_{cj} + \mu_{ct} + u_{it}, \quad (1)$$

where the subscripts i , j , c and t index firms, industries, countries and years respectively, Δn_{it} is the change in the log of employment of firm i in year t , ε_{it} is either an idiosyncratic shock to the sales of firm i or the shock to the sales of its industry j (excluding firm i itself) in year t , F_{it} is a family-firm dummy equal to 1 for family-owned firms and 0 for non-family ones, S_{ct} is a measure of public unemployment insurance (based on the income replacement rate) provided in country c and year t , and X_{it-1} is a vector of firm-specific variables measured in year $t-1$: size (log of market capitalization), asset tangibility (ratio of plant, property and equipment to total assets), profitability (return on total assets), and leverage (ratio of total debt to total assets). Finally, μ_{cj} is a country-industry effect, μ_{ct} is a country-year effect, and u_{it} is the error term. The country-year effects absorb the impact of all country-specific aggregate variables, such as macroeconomic and time-varying institutional variables.

In a variant of this specification we also include an interaction between country effects and the family firm dummy, to allow for the fact that the difference in employment growth between family and non-family firms may vary across countries. In another

specification, we include firm fixed effects instead of country-industry effects. Finally, for robustness, we also estimate specifications that include financial development, labor market tightness, employment protection legislation and creditor rights, since also these institutional variables – besides unemployment insurance – may affect the response of employment to the shocks hitting firms.

In specification (1), the coefficient β_1 measures the elasticity of employment to the sales shock (the pass-through coefficient) in non-family firms, and β_2 the difference in that elasticity between family and non-family firms; β_3 captures the baseline effect of public insurance on risk-sharing in firms, while β_4 is the differential effect of public insurance on risk-sharing in family firms.⁵ The coefficient β_5 controls for potential differences in the rate of employment growth between family and non-family firms, and β_6 allows family firms to have different employment growth rates in countries with different public insurance systems. The specification cannot include public insurance among the explanatory variables, its effect being absorbed by the country-year effects μ_{ct} . Hence $\beta_2 < 0$ indicates that employment responds less to shocks in family than in non-family firms ($\beta_2 = -\beta_1$ being the case of full insurance by family firms), $\beta_3 > 0$ that more public insurance is associated with a greater pass-through of shocks to employment in non-family firms, and $\beta_4 > 0$ that the increase in pass-through associated with public insurance is stronger for family firms. In other words, $\beta_3 > 0$ indicates substitutability between public and private provision of employment insurance, and $\beta_4 > 0$ implies that this substitutability is particularly strong for family firms.

We also test whether firms differ in the propensity to stabilize wages, and if such stabilization varies depending on the degree of unemployment insurance provided by the government. To do so, we estimate an equation analogous to (1), the only difference being that the dependent variable is the growth rate of the average real wage, measured by the change in its logarithm:

⁵ More precisely, the estimate of the pass-through for non-family firms is $\beta_1 + \beta_3 S_{it}$, while for family firms it is $\beta_1 + \beta_2 + (\beta_3 + \beta_4) S_{it}$, and therefore in both cases it depends on the level of the replacement rate S_{it} in the relevant country and year. Therefore, when we discuss the pass-through based only on estimates of β_1 and β_2 we are evaluating it for the baseline case of $S_{it} = 0$, i.e. a country with no public unemployment insurance.

$$\Delta w_{it} = \delta_1 \varepsilon_{it} + \delta_2 \varepsilon_{it} F_{it} + \delta_3 \varepsilon_{it} S_{ct} + \delta_4 \varepsilon_{it} F_{it} S_{ct} + \delta_5 F_{it} + \delta_6 F_{it} S_{ct} + \phi' X_{it-1} + \mu_{cj} + \mu_{ct} + u_{it}, \quad (2)$$

As explained below, unfortunately the sample for which this regression can be estimated is considerably smaller than for employment equation (1), as wage data are available for only about 43 percent of the firms for which we have employment data, since reporting wages in accounting data is at the firm's discretion.

Finally, we test an important prediction of the implicit contract theory, namely that the insurance provided by companies to their employees is “priced” in the form of lower wages. An implication of this prediction is that, insofar as privately supplied insurance is a substitute for public unemployment insurance, its implicit “price” should be lower if public unemployment insurance is more generous: a higher replacement rate should induce employees to place a lower value on firm-provided insurance. To investigate whether the data are consistent with these predictions, we estimate a regression for the log of the real wage w_{it} :

$$w_{it} = \lambda_1 F_{it} + \lambda_2 F_{it} S_{ct} + \pi' X_{it-1} + \mu_{cj} + \mu_{ct} + u_{it}, \quad (3)$$

where $\lambda_1 < 0$ implies a wage discount for family firms, and $\lambda_2 > 0$ a lower wage discount if the replacement rate S_{ct} is higher. As in previous specifications, we control for firm characteristics X_{it-1} , country-industry or firm effects μ_{cj} , and country-time effects μ_{ct} .

2.2 Identification

A key concern is whether our estimates can be interpreted as evidence of causal effects. Specifically, does a negative estimate of coefficient β_2 in equation (1) imply that family ownership and control leads a firm to offer greater employment stability than other firms? By the same token, can a positive estimate of coefficient β_4 be read as meaning that more generous public unemployment insurance induces family firms to be less committed to employment stability? There are two possible reasons why such interpretations of our estimates might be unwarranted: endogenous selection into family ownership, and unobserved heterogeneity between family and non-family firms.⁶

⁶ The same concerns apply also to the wage growth regression (2): as they are addressed similarly in the estimation, for brevity here we refer only to the employment regression.

As far as family-firms' selection is concerned, one may worry that, for some reason, family firms are more prevalent in countries where the government offers less public unemployment insurance and firms offers more employment stability. If so, our estimates would reflect the over-representation of family firms in such countries rather than a causal effect from family ownership to insurance. We deal with this problem in several ways.

First, we estimate country-level panel regressions of the fraction of family firms on the replacement rate and on other time-varying institutional and cultural country characteristics that, according to the literature, may affect family ownership (family values, trust, financial development, labor market tightness, employment protection legislation). We also estimate linear probability models with firm-level data, where the dependent variable equals 1 if the firm is family-owned and 0 otherwise. The results are reported in Tables A1 and A2 of Appendix A. In specifications that do not include country effects, the estimates show that the presence of family firms is uncorrelated with all country-level variables, except for financial development and the replacement rate. But the coefficient of the replacement rate is positive and significant. So, in the countries where employment insurance is less generously provided by the government, and therefore more highly valued by employees, there are *fewer* family firms, not more of them, which excludes the possibility that our results are driven by this type of sample selection. Moreover, in specifications that include country effects, family firm presence is uncorrelated with *all* country-level variables, including the replacement rate, except for financial markets development. Hence, the fraction of family firms is orthogonal to within-country variation in the generosity of the social security system: insofar as our estimates are based only on such variation, they are immune from the above selection critique. As explained below, one of our specifications only exploits this dimension of data variability.

As a second check for the potential effects of heterogeneous selection, we estimate specifications (1) and (2) for a sample of matched family and non-family firms, obtained with propensity-score matching based on firm characteristics (country, industry, size, return on assets, asset tangibility, leverage, and cash-flow volatility). In these estimates, family and non-family firms are balanced on the variables used to construct the propensity score, so that sample composition issues along these dimensions cannot affect the estimated coefficients. We also estimate equation (1) separately for family and non-family firms, thus exploiting the variability of the insurance provided by each type of firm as it

faces different degrees of public insurance. Hence, these regressions are by construction immune from any potential sample composition problem in terms of family and non-family firms.

Even though matching techniques control for observed heterogeneity, they do not eliminate concerns stemming from unobserved heterogeneity: family and non-family firms might differ along unobserved dimensions, in addition to the capacity to commit to implicit contracts, and this might also affect their response to shocks. For example, family firms might use production technologies that require more firm-specific human capital. If so, they may be more reluctant to fire workers in the wake of negative shocks because this would entail a loss of valuable human capital. This can be viewed as an omitted variable bias: following up on the example, the different technology used by family and non-family firms is unobserved, yet it affects the reaction to shocks. This omitted variable would be correlated with $\varepsilon_{it}F_{it}$, so that the estimate of β_2 is biased and cannot be interpreted in a causal sense. This problem arises in all within-country studies of insurance provision by family firms. But our cross-country setting allows us to move one step further. In fact, our main coefficient of interest is β_4 , which captures the differential degree of insurance that family firms provide in countries with different degrees of public insurance. This coefficient is biased if the potential omitted variable satisfies two requirements: (i) the difference in this variable between family and non-family firms is correlated with public unemployment insurance; (ii) it affects firms' response to shocks. For example, if the different sensitivity of employment to shocks in family and non-family firms were to stem from different technologies, such technological differences would have to decrease as the generosity of public unemployment insurance increases. Clearly, this is a stronger requirement than just assuming some form of heterogeneity between family and non-family firms that determines the response to shocks.

However, a skeptical reader might still argue that this is a possibility: there might be country characteristics that affect differentially family and non-family firms and that are also correlated with the replacement rate. To address this concern, in yet another specification we exploit *only within-country* variation in the degree of public insurance to assess if, as public unemployment insurance changes, the amount of insurance provided by family firms changes accordingly. In this specification, we add as additional controls a set of country dummies interacted with the shock and the family-firm dummy (including all lower-level interactions):

$$\Delta n_{it} = \beta_3 \varepsilon_{it} S_{ct} + \beta_4 \varepsilon_{it} F_{it} S_{ct} + \beta_6 F_{it} S_{ct} + (\phi_{1c} \varepsilon_{it} + \phi_{2c} F_{it} + \phi_{3c} \varepsilon_{it} F_{it}) \mu_c + \gamma' X_{it-1} + \mu_{cj} + \mu_{ct} + u_{it}, \quad (4)$$

where μ_c is a country dummy. In this specification, the triple interaction $\varepsilon_{it} F_{it} \mu_c$ captures any country-level attribute possibly correlated with the replacement rate and capable of determining a differential response to shocks by family and non-family firms. Hence, the coefficient β_4 of the interaction between the shock, the family firm dummy and the replacement rate is estimated exploiting only changes in family firm provision of insurance following changes in public insurance. This additional control comes at the cost of not being able to identify the direct effects of the shocks, that are absorbed by the interaction with the country dummies: in fact, in equation (4) we drop β_1 and β_2 .

Another possible concern is reverse causality from firm-level employment growth Δn_{it} to the provision of public unemployment insurance S_{ct} in the corresponding country: governments may expand the provision of employment insurance in recessions and reduce it in expansions. However, all our specifications address the potential endogeneity of public unemployment insurance by including a country-time effect μ_{ct} , which absorbs any country-level aggregate variation in firm-level employment growth Δn_{it} and thus any possible feedback from aggregate employment growth to unemployment insurance S_{ct} .⁷

3. Data and variables

To gauge the differential ability of firms to provide employment and wage insurance in countries with different unemployment insurance systems, we bring together three types of data: (i) firm-level measures of employment, wages and sales and other characteristics such as total assets, leverage, asset tangibility and profitability; (ii) firm ownership, to classify firms as family or non-family firms; and (iii) country-level measures of public unemployment insurance, labor market tightness and financial development.

⁷ Moreover, our measure of public unemployment insurance is anyway purged of any automatic business-cycle variation: as explained in detail in Section 2.1, the variable varies by construction only when legal reforms change either the unemployment replacement rate or the length of the benefits' eligibility period, and therefore is unaffected by the operation of automatic stabilizers built into existing social security rules.

3.1 Sources and definitions

Employment, wage and financial data for firms outside the U.S. are drawn from Worldscope and Osiris and for U.S. firms from Compustat, which contains historical data from the financial reports of publicly listed companies. We collect data for firms incorporated and listed in 41 countries in the period 1988-2013, with two screens: we drop financial institutions and firms that do not have employment data (total number of employees at firm level) for at least seven consecutive years, so as to be able to detect employment insurance over a reasonably long period. This leaves 7,822 firms and 124,432 firm-year observations. Wage data (total firm-level staff costs) for at least seven consecutive years are available for a subset of 3,350 firms, and a total of 49,122 firm-year observations; however, our results about employment insurance continue to hold in this subset of firms.

Family firms are defined as those where a family blockholder is the ultimate largest shareholder, has at least 25 percent of the firm's cash flow rights, and is present in the firm's management. This strict definition is applied in all our baseline tests, although we then check robustness by relaxing it in two ways: (a) lowering the threshold for cash flow rights to 10 percent, or (b) retaining the 25 percent threshold but removing the requirement of presence in the firm's management. All our results are confirmed with these alternative definitions.

Ownership data are based on the sources used in Ellul et al. (2010). In identifying whether the firm's ultimate owner is a family blockholder, the major challenge is that in many firms the largest shareholder is a private company or a nominee account: in these cases ascertaining if the firm is family-owned requires identifying the owner of the controlling private company or the holder of the nominee account. To this purpose, we first use the scant ownership data in Worldscope, together with hand-collected data taken from company websites, and – for European firms – from the ownership file of AMADEUS. Altogether these sources allow us to identify the ultimate blockholder for less than 25 percent of our sample. For the remaining firms, we resort to direct information obtained via a questionnaire about their ultimate owner. For non-respondents (32 percent of the sample) we use the classification in Faccio and Lang (2002) for European firms and that in Claessens, Djankov, and Lang (2000) for East Asian firms: we classify as non-family firms those classified as “widely held” by these studies. For US firms, we collect ownership data from the 20-F forms or proxy statements every two years

over the same period. The definition of family firms varies in the literature, mostly because of different ownership thresholds used to define family blockholders: based on our criterion, the sample of 7,822 firms used in our estimation contains 2,359 family firms. The resulting fraction of 1/3 is bracketed by those in previous studies.⁸

Our country-level measure of public unemployment insurance, S_{ct} , is based on the income replacement rate, i.e. the ratio of unemployment benefits to previous salary. We use the gross replacement rates as computed by Aleksynska and Schindler (2011), using the ratio of the unemployment insurance benefits received by a worker in the first two years of unemployment to the worker's last gross wage. This measure is intended to capture both the level and the duration of unemployment benefits, which are the two measures used by Agrawal and Matsa (2013) in their study on US state-level data. Aleksynska and Schindler (2011) calculate gross replacement rates for the first and second year of unemployment at annual frequency by identifying changes in regulations. The information is obtained from various sources, including the ILO, OECD and national agencies. We extend their measures, which are computed up to 2005, to the end of our sample period (2012). This variable – hereafter labeled “unemployment security” – is used in all our specifications to measure the public provision of unemployment insurance.

Finally, we measure each country's financial development as the ratio of its stock market capitalization to GDP computed by the World Bank (World Development Indicators), employment protection legislation by the EPL indicator produced by the OECD (Strictness of Employment Protection dataset), and labor market tightness as the reciprocal of the share of long-term in total unemployment (“long-term” being defined as 12 months or more), drawn from OECD (2012), so that higher values indicate shorter unemployment duration. While EPL captures the regulatory costs of dismissing workers, labor market tightness captures the likelihood of finding a new job quickly, hence the extent to which the state of the labor market itself mitigates unemployment hardship. This variable therefore captures a different dimension of the demand for employment insurance. Since the presence of family firms correlates with financial development but not with other country-level variables, we control for financial development in the main tables, while we include employment protection legislation and labor market tightness as

⁸ The fraction of family firms in our dataset is smaller than in the dataset of Faccio and Lang (2002) (for European firms) and of Stijn, Claessens, Djankov, and Lang (2000) (for Asian firms), but larger than in the dataset used by Lins et al. (2013).

additional controls in specifications reported in Appendix A to check the robustness of our results.

3.2 Measures of sales shocks

The sales shock ε_{it} is a key variable in specifications (1), (2) and (4). As already mentioned, we measure these shocks in two different ways, and use both measures to test the robustness of our results. First, we measure the sales shock ε_{it} as the growth of the sales of the industry to which firm i belongs, after subtracting the sales of firm i itself. The advantage of this measure is that it does not include the sales of firm i , and therefore avoids potential reverse causality from employment growth to the sales growth of firm i . The disadvantage is that industry-level shocks may give a biased measure of firms' employment insurance, as they compound two elements that are actually distinct: how much insurance a firm offers when hit by a shock and how exposed the firm is to industry shocks. As argued by Michelacci and Schivardi (2013), family firms might select low-risk-low-return, and possibly less cyclically sensitive, projects. If so, employment in family firms might respond less to industry shocks because these firms are less exposed to them. In fact, in a regression of firm sales growth on industry sales growth (plus the controls X_{it-1} , the country-industry dummies μ_{cj} and the time dummies μ_t), the coefficient for non-family firms is 0.58, while the coefficient of the interaction between industry shocks and the family dummy is -0.21 , significant at the 5 percent level. Although this still implies lower employment risk in family firms, the underlying economic mechanism is very different from the firm's sheltering workers from actual shocks. This explains why we also rely on a measure of firm-level idiosyncratic shocks ε_{it} , estimated as the residual from a first-stage predictive regression: the growth rate of the sales of firm i in year t is regressed on its lagged value, the same set of firm-level control variables as in specification (1), industry effects and country-time effects. The inclusion of country-time effects ensures that the resulting estimates of the firm-level sales shocks are purged of all country-level aggregate variation in sales, and therefore reflect purely idiosyncratic firm-level risk. Since the lagged dependent variable and fixed effects are included, the predictive equation is estimated via the generalized method of moments (GMM) of Arellano and Bond (1991), to obtain consistent estimates. The residual from this regression is then included as the ε_{it} variable in the estimation of

equations (1) and (2) and their variants. To correct for the generated regressor problem, in all the specifications that rely on this measure of the shock ε_{it} we use bootstrapped standard errors calculated using 100 repetitions.

3.3 Descriptive statistics

Table 1 shows the number of firms for each of the 41 countries in our sample. As expected, there is significant variation, with the U.S., Japan, the United Kingdom, Germany, France and Australia having the largest samples.

[Insert Table 1]

Columns 1 and 2 show the number of non-family and family firms in each country. The relative number of these two types of firms varies considerably across countries: non-family firms are more widespread in Australia, Canada, Ireland, Japan, New Zealand, Norway, the United Kingdom and the United States, being at least twice as many as family ones; the opposite occurs in Argentina, Brazil, Greece, Hong Kong, Malaysia, Mexico and South Korea, where family firms are more widespread than non-family ones. The differences are less extreme in continental Europe, but also there the picture is mixed, with fewer family firms in Denmark, France, Germany, the Netherlands, Spain and Sweden, and more in Italy and Portugal. Overall, our sample includes about twice as many non-family firms as family firms. Columns 3 and 4 report average firm sales growth by country, for non-family and family firms respectively. Broadly speaking, firms in emerging markets have higher annual sales growth than in developed countries, but there is also significant dispersion in the comparative performance of family and non-family firms: in some countries (e.g. Australia, Brazil, Colombia, Hong Kong, Singapore and Czech Republic) sales growth is faster in family firms, while in others (e.g. France, Germany, Mexico, the Netherlands, New Zealand and South Africa) the opposite is true. Columns 5 and 6 show average total employment in non-family and family firms. In almost all countries family firms have fewer employees, consistently with the literature on the relative size of family and non-family firms.

Column 7 shows our unemployment security measure, i.e. the average gross income replacement rate, for the countries in our sample. There are significant international differences: for example, in Colombia, Indonesia, Malaysia, Mexico, and Singapore, the replacement rate is zero; in France, the Netherlands, Norway, Portugal, Spain, and

Switzerland it is over 0.40. In addition, the rates vary very significantly over time – within the same country – in a good number of countries due to reforms in unemployment insurance. For example, South Korea had no unemployment insurance until 1994, introduced it in 1995 with a replacement rate of 0.125, and reduced it to 0.063 in 2002. In Australia there have been several changes to the social security system: the replacement rate rose gradually to 0.23 in 1997 and then slowly decreased to 0.19 in 2007. To highlight this variability over time, Column 8 of Table 1 shows the coefficient of variation of the gross replacement rate for each country, i.e. its standard deviation divided by its average over 1988-2013. Several countries – such as Italy, South Korea, Taiwan, Thailand and Turkey – experienced significant changes. Others did not: for example, Mexico had no unemployment insurance throughout the entire period, and in the UK and Spain the replacement rate changed little over time, respectively around a low and high average.

Figures 1 and 2 illustrate the cross-country and within-country variability of unemployment security. Figure 1 displays the time series of unemployment security for the two countries with the largest number of firms in our sample from America (United States and Canada), Asia (Japan and South Korea), and Europe (United Kingdom and Germany). The figure confirms the considerable variability of replacement rates over time, as well as the variation of its average level across countries. Figure 2 documents that unemployment security varies widely both across countries and over time also for the sample as a whole: the left panel of the figure illustrates cross-country variation, by plotting the average replacements rate for each country; the right panel provides a gauge of the time variation of replacements rates within each country, and shows that only 9 countries (out of 41) feature no change in unemployment security over the sample period.

[Insert Figures 1 and 2]

4. Employment insurance within firms

This section presents the regression results on the provision of employment insurance by firms, and its relationship with public unemployment insurance. We start with panel regressions (Section 4.1), then report the estimates obtained from a matched sample of family and non-family firms (Section 4.2), and from separate subsamples of family and non-family firms (Section 4.3). Next, we investigate whether firms offer different amount of insurance depending on the persistence of the shocks (Section 4.4) and their access to

capital markets (Section 4.5). Finally, we analyze the channels through which family firms provide employment insurance (Section 4.6).

4.1 Panel regressions

Table 2 shows the estimates of various specifications of the employment growth equation (1), where the sales shock for each firm-year observation is the contemporaneous growth in the sales of the firm's industry and country, net of those of the firm itself. Standard errors are clustered at the country level.⁹ All regressions in the table include country-year effects and firm-level controls for company size (log of market capitalization), profitability (return on assets), asset tangibility (ratio of plant, property and equipment to total assets), and leverage (ratio of total debt to total assets), all lagged by one year.

[Insert Table 2]

The regressions in Columns 1 and 2 include country-industry effects. Column 1 shows the estimates of the baseline specification (1), while Column 2 also includes interactions with financial development, beside those with public unemployment security. This specification is further enriched in Column 3, by replacing the country-industry effects with firm fixed effects, to control for firm-level unobserved heterogeneity. The specification of Column 3 is then re-estimated in Column 4 using only negative sales shocks, in order to focus on the shock realizations for which employees truly need insurance. Column 5 reports the estimates of the expanded specification (4), which allows the differential responses by family and non-family firms to vary systematically across countries, by including a triple interaction between the sales shock, the family-firm dummy and country effects ($\varepsilon_{it}F_{it}\mu_c$), as well as the corresponding double interactions ($\varepsilon_{it}\mu_c$ and $F_{it}\mu_c$). This specification is very demanding, as it controls for any fixed country attribute that might differentially affect the response of family and non-family firms to shocks. In fact, in this specification the coefficients β_1 and β_2 cannot be identified, being absorbed by the country dummies interacted with the shocks and the family dummy. The coefficient β_4 is now identified only by within-country changes in unemployment security. Since only sizable changes in the security system should

⁹ We also experimented with clustering standard errors at the firm level, obtaining similar results.

arguably give rise to changes in the insurance offered by family firms, in Column 6 we re-estimate this specification using only periods characterized by “large reforms” in replacements rates. These periods are time intervals centered on large and persistent changes in replacements rates, i.e. five years before and five years since the reform (including the reform year itself). We define large and persistent reforms as changes in the replacement rate (i) exceeding $\pm 3\%$ in a single year, (ii) not completely reversed in the subsequent 4 years, and (iii) not accompanied by major changes in employment protection legislation, defined as changes in the EPL index exceeding ± 0.5 (the index ranging from 0 to 6) in the subsequent 4 years for OECD countries. As the EPL index is available only for OECD countries, for the six non-OECD countries of our sample that featured large reforms of the replacement rate we retained only reforms not accompanied or followed in the subsequent 4 years by significant changes in the regulation of workers’ dismissal.¹⁰ This third requirement is imposed to avoid the potential confounding effects of changes in other aspects of labor market regulation. We describe these events in Table A3, which reports the average gross replacement rate in the five years before and after the reform and the average value of the EPL over the same time window: 30 large reforms occur in the sample, affecting 25 distinct countries. If workers’ demand for employment stability is affected only by persistent changes in public insurance against unemployment risk, then this specification is more appropriate as it filters out short-lived reforms from our unemployment security indicator.

The pass-through coefficient shown in the top row of Table 2 is invariably positive and significant ($\beta_1 > 0$): the baseline elasticity of employment to industry sales shocks ranges from 14% to 20% depending on the specification. But in family firms the pass-through is considerably milder than in non-family ones ($\beta_2 < 0$): its implied estimate ($\beta_1 + \beta_2$) ranges from 2% to 3%, depending on the specification. The hypothesis $\beta_1 + \beta_2 = 0$ is not rejected for any of the specifications of Table 2 except that in Column 1. Interestingly, the estimate of $\beta_1 + \beta_2$ is closest to zero (1.9%) for negative sales shocks (Column 5).

As to the key research question of this paper – whether firm-provided insurance is affected by public insurance – the estimates indicate that more generous public unemployment security is not associated with a significantly different pass-through by

¹⁰ All our results are robust to the exclusion of firms incorporated in non-OECD countries from the sample.

non-family firms (the hypothesis that $\beta_3 = 0$ not being rejected in any specification), while it is associated with significantly lower provision of insurance by family firms, i.e. a greater pass-through of sales shocks. For family firms, the estimate of β_4 is not only statistically significant, but economically sizeable in all specifications: it implies strong substitutability between private and public unemployment insurance, with family firms offering close to full insurance if no public insurance is provided (a pass-through as low as 2% for $S_{ct} = 0$), and barely more insurance than non-family firms if there is full public insurance (a pass-through of 11% for $S_{ct} = 1$).¹¹

In Column 2, the role of unemployment security is tested jointly with that of financial development. The coefficients of interest (β_1 , β_2 and β_4) are almost unchanged from Column 1, while none of the coefficients of the interactions with financial development is significantly different from zero: the hypothesis that financial development does not impact the demand for insurance by workers cannot be rejected. The results are also robust to the inclusion of firm fixed effects (Column 3). Moreover, as expected, both the insurance offered by family firms and its substitutability with public unemployment insurance emerge more clearly for negative shocks (Column 4).¹²

The last two columns report the most demanding specification, i.e. that of equation (4) where country dummies are interacted with shocks and with the family firm dummy, so that the estimation relies only on within-country variation in unemployment security: the coefficient of the triple interaction between the family-firm dummy, the shock and unemployment security is positive and significant, and even larger than in the basic specifications. Hence, the substitutability between private and public provision of employment insurance emerges from within-country variation alone. Interestingly, the estimate is more precise if one focuses on large reforms only (Column 6), although the difference is small. These results dispel two potential concerns regarding our estimates: first, that they may be driven by unobserved country characteristics impacting differentially the response to shocks by family and non-family firms; second, that they can

¹¹ Regarding firm-level controls (not shown for brevity), employment growth is significantly lower in large firms and greater in more profitable ones: this is as expected, since mature firms grow less, while more profitable ones invest and grow more. Instead, leverage and asset tangibility are not significantly related with employment growth.

¹² In Column 3 the coefficient of the family-firm dummy can still be estimated owing to the presence of some firms that switch from the family to the non-family status. This is not the case in Column 4, as no such “switchers” are present in the smaller sample used to estimate that specification.

arise from selection into family ownership at the country level. In fact, as noted in Section 1.2, the share of family firms is unrelated to *changes* in unemployment insurance, the only dimension of data variability used to estimate the parameters in this specification.

As explained in Section 2.2, these results based on industry-level shocks may provide a biased measure of firms' employment insurance, insofar as family firms are less exposed to industry-level sales shocks by selecting less cyclically sensitive projects. To address this issue, Table 3 repeats the estimation with our second definition of the sales shock variable, which is measured at the firm level and captures idiosyncratic variations in sales (see Section 2.2 for the construction of this alternative measure, and its merits compared with industry-level shocks).

[Insert Table 3]

The estimates obtained using idiosyncratic shocks fully confirm – indeed strengthen – all the patterns found with industry shocks. Specifically, the coefficient β_1 is larger in absolute value and more precisely estimated: idiosyncratic shocks to firm-level sales affect employment more severely than industry shocks. The offset in family firms is correspondingly larger. In fact, we never reject the hypothesis $\beta_2 = -\beta_1$ in the specifications of Table 3: this implies that employees of family firms are full insured in countries where the replacement rate is zero. The offset decreases as the replacement rate increases¹³ ($\beta_4 > 0$) and is stronger for negative shocks (Column 4). Finally, the results continue to hold in the estimates of specification (4), which includes the triple interaction between the sales shock, the family-firm dummy and country effects, as shown in Column 5 (that uses all observations) and Column 6 (that restricts the sample to large and persistent changes in the social security provision).¹⁴

The results of this section indicate that the substitutability between the insurance provided by family firms and that provided by social security systems is present irrespective of whether shocks to firm sales are measured at the industry or at the firm level, but emerge more clearly for idiosyncratic shocks, as one would expect considering

¹³ There is some evidence of some substitutability in non-family firms as well ($\beta_3 > 0$), but this is not robust across specifications.

¹⁴ We also find that family firms provide more insurance in countries with higher financial development, in line with the idea that the easier access to finance facilitates insurance provision. The effect is however small and only marginally significant.

that these are more diversifiable than industry shocks. Moreover, as mentioned above, estimates based on idiosyncratic shocks measure only the transmission of shocks to employees, irrespective of the relevant firm's exposure to industry fluctuations. For brevity, therefore, hereafter we focus on idiosyncratic shocks. All the results are confirmed with industry shocks.

We check the robustness of our results in different ways. First, we investigate whether the substitution between firm-level employment insurance and the public unemployment insurance regime is robust to the inclusion of other time-varying indicators of the labor market. Specifically, we expand specification (1) to control also for employment protection legislation (EPL), for labor market tightness, and for the respective interactions with the shock, family ownership and replacement rate. These regressions, reported in Tables A4 and A5 of the Appendix, show that that the results are robust to these changes in specification.

We also test whether the protection of creditor rights afforded by bankruptcy law constrains firms' ability to provide employment insurance by increasing the threat of liquidation in case of financial distress. In Table A6 of the Appendix we report estimates of our baseline regression separately for countries in the bottom and in the top tercile of the distribution of creditor rights (measured by the LaPorta et al. (2000) index): in countries where creditor rights are weak, family firms provide more employment insurance and are closer substitutes for public unemployment insurance than in countries where creditor right are strong.

Finally, we test whether the provision of insurance to employees is present also for the subsample of dynastic family firms, i.e. those controlled by descendants of the founder, the idea being that later generations may have a different degree of commitment towards employees compared with the founder. Since we do not observe succession within families, we identify dynastic family firms as those that are at least 30 years old since incorporation: the 30-year threshold appears long enough an interval for succession at the helm of the company to have occurred. To ensure homogeneity with non-family firms, we impose the same age threshold on them as well. The results are shown in Table A7 of the Appendix, and on the whole are very similar to those obtained for the entire sample. The same applies when using a threshold of 25 or 35 years to identify dynastic firms.

4.2 Matched-sample regressions

As explained in Section 1.2, to address possible selection biases due to different characteristics of family and non-family firms, we repeat the estimation on a balanced matched sample. Each family firm is matched with two non-family firms, relying on propensity-score matching based on country, industry, size, return on assets, asset tangibility, leverage, and cash-flow volatility.¹⁵ The matching produces a sample of 1,938 family firms and 3,876 non-family ones. Table A8 in Appendix A reports the mean and median values of financial characteristics of family and non-family firms in the matched sample. For most observed firm characteristics, matched family firms are not different from non-family firms, the only exceptions being leverage, where the difference is statistically significant at the 10% confidence level.

Table 4 shows how employment growth responds to idiosyncratic sales shocks in the matched sample. The structure of the table is identical to the previous ones. The results are also very similar: the pass-through of sales shocks ranges between 21 and 29% in non-family firms, almost exactly offset by the coefficient β_2 for family firms; moreover, the insurance offered by family firms decreases as public unemployment insurance increases, also in the specifications where country dummies are interacted with the shocks and the family-firm dummy.

[Insert Table 4]

The fact that the results of Tables 2 and 3 are confirmed in this balanced sample indicates that they are not driven by the uneven distribution of family firms across industries, countries or firms characteristics but rather by a different propensity of family and non-family firms to offer insurance to their workers.

4.3 Separate regressions for family and non-family subsamples

The matching method used to obtain the estimates in Table 4 controls for observable differences between family and non-family firms, but does not rule out that our results

¹⁵ The reason for matching each family firm with two non-family ones is that in our sample the ratio of family to non-family firms is very close to one to two. Moreover, the non-family firms used in the matching comprise only firms in which family blockholders hold less than 5 percent of the cash-flow rights, instead of less than the 25 percent threshold that we use to define non-family firms: this stricter criterion is meant to avoid matching a family firm with one that has a significant family blockholding, e.g. 20%, yet is classified as non-family by our definition.

may be affected by unobserved differences between family and non-family firms. To address this concern, in Table 5 we re-estimate our regressions separately on the two subsamples of 2,359 family firms and 5,463 non-family ones, using firm-level idiosyncratic shocks to sales.¹⁶ In these regressions, we no longer estimate the difference between family and non-family firms but we can still identify how the insurance provided by each type of firm varies with the degree of public insurance. The benefit of this approach is that identification is based only on variation within each group of firms, so that the results cannot be driven by unobserved heterogeneity between family and non-family firms.

[Insert Table 5]

For each of the two subsamples, the table presents the estimates obtained using all the observations (Columns 1 and 4), using only negative realizations of the sales shocks (Columns 2 and 5), and finally controlling for country dummies interacted with the shocks (Columns 3 and 6). To save on space, for the latter specification we focus on the sample of large and persistent changes in the replacement rate, but confirm that the results also hold in the overall sample.

When the regressions are estimated on the subsample of family firms only, these are again seen to mitigate the impact of sales shocks in countries and periods in which public unemployment insurance is less generous. In fact, for these firms the coefficient of the shock is never statistically different from zero, while the coefficient of the interaction between the shock and unemployment security is positive and significant: firm insurance is full when no public insurance is provided, and it decreases as unemployment security increases. In contrast, in non-family firms about 30% of the sales shocks are transmitted to employment, the pass-through coefficient being around 0.3 and statistically significant, while the coefficient of the interaction with unemployment security is close to zero and not statistically significant.

The substitutability relationship between the private insurance offered by family firms and the unemployment insurance offered by the social security system is indeed present both across countries and over time. To capture it graphically across countries, we plot a measure of the employment insurance offered by family firms in each country against the replacement rates of the respective social security system. We measure the insurance

¹⁶ To save space, in what follows we focus on the specification with firm effects, unless otherwise specified.

offered by family firms in each country by estimating the respective family-firm pass-through coefficients via separate regressions for each of the 41 countries in our dataset. Specifically, for each country c we estimate the following regression using only the family firms present in that country:

$$\Delta n_{it} = \beta_c \varepsilon_{it} + \gamma' X_{it-1} + \mu_j + \mu_t + u_{it}, \quad (5)$$

where β_c is the pass-through coefficient of country c , ε_{it} are the idiosyncratic sales shocks, μ_j are industry effects and μ_t are year effects. The employment insurance offered by the family firms in country c is measured by $1 - \beta$, namely the fraction of the sales shocks that family firms do not transmit to employment: for instance, if in country c the pass-through coefficient for family firms is 0.03, then the measure of the employment insurance that they offer is 97%.

Figure 3 plots this country-level measure of the employment insurance provided by family firms against the public unemployment insurance in the corresponding country, measured by its average replacement rate from 1988 to 2013. The substitutability between them is conveyed visually by the negative slope of the regression line plotted in the figure.

[Insert Figure 3]

This substitutability emerges equally clearly from within-country time-series variation in replacement rates: Figure 4 conveys visually the impact that major changes in unemployment security have on the employment stabilization provided by family firms. The major changes in replacement rates correspond to the large and persistent reforms defined above in Section 4.1. On the vertical axis, the figure plots the change in the measure of the employment insurance provided by family firms (i.e. the change in $1 - \beta_c$, as defined above) between the 5 years before the reform and the subsequent 5 years (we discard all reforms for which less than 5 years of data before and after are available, to have a sufficient number of data points to estimate the coefficient). On the horizontal axis, the figure plots the change in unemployment security S_{ct} triggered by a reform in a given country: for instance, the point “NO02” corresponds to a 2002 reform that reduced the gross replacement rate in Norway from 0.62 to 0.48. The figure shows that most of the reforms that increased unemployment security are associated with a reduction in the unemployment stability offered by family firms (points in Quadrant IV), i.e. with an

increase in the pass-through coefficient β_c . Conversely, all the reforms (except three) that reduced public unemployment security are concomitant with greater provision of employment insurance by family firms (points in Quadrant II of the graph). Hence, Figure 4 shows that the substitutability between the provision of employment insurance by governments and by family firms is apparent also in the time series dimension when focusing on major changes in unemployment security, not only in the cross-country dimension illustrated by Figure 3 (where each observation refers to a single country for the whole sample period).

[Insert Figure 4]

4.4 Distinguishing between transitory and persistent shocks

Firms are more likely to be able to offer insurance against transitory than persistent shocks. This prediction, formalized by Gamber (1988), has been tested for wage insurance by Guiso, Pistaferri and Schivardi (2005) for Italy, by Cardoso and Portela (2009) for Portugal, by Kàtai (2008) for Hungary, and by Guertzgen (2013) for Germany. We adapt the approach by Guiso, Pistaferri and Schivardi (2005) to the case of employment insurance, simplifying some of their assumptions (see Appendix B for details) and check whether the substitutability between public and firm provided insurance is stronger against transitory than permanent shocks. The results of this exercise, reported in Table 6, fully support this hypothesis.

[Insert Table 6]

Columns 1 and 2 of the table show the estimates respectively obtained with transitory and persistent shocks. As expected, firms provide more insurance against transitory than against permanent shocks: the top row coefficient in Column 1 is smaller than that in Column 2. Moreover, family firms provide full insurance against transitory shocks, as in Column 1 the first coefficient (-0.195) is completely offset by the second one (-0.191); however, they do not offer greater insurance than non-family firms against persistent shocks, as the second coefficient in Column 2 is not significantly different from zero.

Consistently with the overall picture, the coefficients of the triple interaction between the sales shock, the family firm dummy and unemployment security is positive and significant for transitory shocks but not for permanent ones: there is substitutability between the employment insurance provided by family firms and by social security

systems against transitory shocks, but not against persistent ones. Family firms do not reduce their insurance against these shocks in response to more public provision of such insurance, because they do not provide much of it in the first place!

4.5 Does employment insurance depend on firms' access to finance?

We argued above that the level of insurance provided by firms depends not only on the credibility of their commitment to implicit contracts but also on their access to finance. Berk and Walden (2013) contend that access to capital markets enables firms to offload the risk they assume from workers. When firms have limited access to financial markets, therefore, we expect both the difference in insurance provision between family and non-family firms to be reduced and the substitutability between firm- and government-provided insurance to be weaker. To test these hypotheses, we use banking crises (as defined by Laeven and Valencia, 2012) as a laboratory, these being episodes in which firms' access to capital markets is likely to be impaired.¹⁷

To single out the financial access channel, we also identify recessions not associated with a banking crisis, which for brevity we refer to as “recessions”: in these periods, firms should still be able to provide employment insurance (in fact more valuable than ever to their employees), since their access to financial markets should not be impaired. We define years with such a recession as those in which the Gross Domestic Product's growth rate is zero or negative, based OECD data, but no banking crisis occurred according to the classification by Laeven and Valencia (2012).

We benchmark the estimates obtained for banking crises and for recessions against those obtained using the residual subsample of “normal” years, defined as years in which neither a recession nor a banking crisis occurred. Note that these sample splits are done based on the economy-wide environment rather than potentially endogenous firm characteristics. Table 7 shows the results for normal years in Columns 1-2, those with recessions in Columns 3-4, and those for banking crises in Columns 5-6.¹⁸

¹⁷ Laeven and Valencia (2012), define a systemic banking crisis as one in which there are both significant signs of financial distress in the banking system and significant banking policy intervention measures in response to significant losses in the banking system, and apply this definition to classify crises in a large set of countries between 1970 and 2011.

¹⁸ We comment the results for the regressions with all shocks (Columns 1, 3,5), but note that, as in previous tables, all the effects are confirmed and magnified in the regressions estimated on the subsample with negative sales shocks only (Columns 2,4,6).

[Insert Table 7]

First, the estimates in the table show that the pass-through of shocks for non-family firms is stronger in recessions than in normal years, β_1 being 0.22 in normal years and 0.28 in recessions. However, family firms offset this increased pass-through: β_2 equals -0.18 in normal years and -0.25 in recessions, which suggests that in fact they step up their insurance provision when it is most needed. Moreover, their provision of insurance correlates negatively with that by governments both in normal times and in recessions.

Things are very different during banking crises. In those periods, the transmission of shocks to employment in non-family firms is higher than in normal periods (as β_1 rises to 0.30), just as it does in recessions. But in banking crises the offset by family firms is much lower (β_2 is -0.11 and not statistically different from zero): family firms behave similarly to non-family firms, which is not the case during simple recessions. Moreover, there is still evidence of substitutability between firm- and government-provided insurance, although the estimates are on the borderline of statistical significance.

Overall, these results further corroborate the evidence of substitutability in insurance provision between firms and the government, and highlight that family firms' ability to insure their employees depends crucially on their access to financial markets: when this is impaired, their behavior is closer to that of their non-family analogues, i.e. offer less insurance and substitute less for its public provision.

4.6 How do firms provide employment insurance?

A natural question concerns the financial margins on which family firms adjust so as to absorb sales shocks and provide implicit insurance to their employees. The evidence in the previous section suggests that *external* finance is one such margin: when they have better access to financial markets, their employment level responds less to sales shocks. But family firms may also bear part of the costs of insurance provision by using *internal* financial resources. In this section we investigate how some key financial indicators respond to sales shocks. We consider three indicators: earnings, dividends and cash holdings, all normalized by the previous year's total assets. If family firms retain their employees in the wake of a drop in sales while non-family firms fire some of them, the earnings of the former should decrease more than those of the latter. Similarly, the extra labor costs that they bear and the corresponding reduction in profits should be reflected in

lower dividends and/or in decreased cash holdings. All these effects should be stronger the lower the degree of public unemployment security, when family firm insurance provision is stronger.

To test these predictions, we replace employment growth with these financial indicators as dependent variables in the baseline specification (1). Table 8 shows the results for the full sample and for the negative shocks subsample. They are consistent with the view that to some extent family firms provide insurance by directly bearing some of the implied costs: earnings, dividends and cash holdings are more sensitive to shocks in family than in non-family firms, although the difference is fairly small, the coefficient for family firms being about 5% larger than for non-family firms in all specifications. Moreover, the extra sensitivity decreases with unemployment security, in line with the fact that family firms provide less insurance when there is more public insurance.

[Insert Table 8]

Overall, these estimates indicate that firms absorb shocks by modifying more strongly cash holdings than earnings, and earnings more than dividends. The sensitivity to sales shocks is lower for earnings than for cash and, for the full sample, it is not statistically significant for dividends, in line with the well-known finding that firms try to pay a smooth flow of dividends to their shareholders (see for example Brav et al., 2005).

5. Wage insurance

Workers should be interested not only in the stability of employment but also in that of wages. In principle, wages can vary both as a result of renegotiation in the wake of sales shocks and as a result of changes in the hours of overtime work, which is generally better paid than normal worktime. Therefore, it is important to investigate whether family firms offer more or less wage stability than non-family ones, and whether such stability is systematically related to the provision of public unemployment insurance. The evidence that our wage data can provide on these issues is to be taken with caution, because of their lower quality and more limited coverage compared to employment data. However, it is worth noticing that all the previous results regarding employment insurance hold also for the subsample of firms for which wage data are available.

In Table 9 we investigate wage insurance in the subsample of companies for which at least seven consecutive years of wage data are available, estimating equation (2) and variants of it. The dependent variable is the percentage change of the average real wage in the corresponding firm-year, obtained by dividing the firm's wage bill by its employment level. The table closely replicates the specifications reported in Table 3 for employment growth. The results, however, differ markedly.

[Insert Table 9]

First, the coefficient estimates in the top row of Table 9 are considerably lower than those in the top row of Table 3, suggesting the presence of wage stickiness: faced with a sales shock, firms adjust the number of employees more than real wages. The estimates are very similar across the different specifications: the basic one (Column 1), the specification that controls for financial development (Column 2), that with firm fixed effects (Column 3), and that estimated on the negative shocks subsample (Column 4).

Second, rather than providing more insurance, as in the case of employment, family firms display wider wage fluctuations than non-family firms: the coefficients of the second row are positive and significantly different from zero. The magnitude of the effect is fairly small: for example, the elasticity of wages to shocks is 6.5% in non-family firms, and 0.4% larger in family firms. Still, it is opposite to that of employment insurance. This result may be explained by the “renegotiation hypothesis” discussed in the introduction: family firms may be able to get wage concessions from their employees in response to drops in sales and are ready to raise wages in the case of sales gains. But, since our wage data measure the average wage *per worker* paid in a given firm, this response of wages to sales shocks may simply reflect the fact that in family firms hours worked respond more to sales shocks, i.e., employees are ready to do overtime when the firm faces an abnormally high demand, and reduce their hours worked when demand is weak. Possibly owing also to this flexibility of their labor force, family firms manage to save jobs in downturns, and therefore provide greater employment stability.

The effects of public unemployment insurance are less clear cut. For non-family firms, there is some evidence that the degree of wage insurance is higher when unemployment security is more generous. In fact, β_3 is negative and statistically significant in the first three specifications, while it loses significance in the negative shocks sample (Column 4) and with the interactions between country dummies, shocks and the family firm dummy

(Columns 5 and 6). A possible interpretation is that, when the public insurance is more generous, the outside option of workers is higher, so that they are less willing to accept wage cuts to save jobs. As a consequence, the wage is less affected by shocks. This effect is not present in family firms: β_4 is positive in the first five columns, although statistically different from zero only in the first two. Moreover, the wage insurance offered by family firms does not vary with public insurance provision, the null hypothesis $\beta_3 + \beta_4 = 0$ being never rejected. This is again consistent with the wage renegotiation hypothesis: the employees of family firms should be more willing to accept wage variability in exchange for employment stability.

As done for employment insurance in Section 3.2, also for wage insurance we check whether our results are affected by the unequal distribution of family firms across industries with different technology or demand characteristics, across countries with different characteristics, or across different firm types. To this end, we re-estimate the specifications in Table 9 on a matched sample of family and non-family firms, built using the same propensity score matching procedure based on country, industry and firm characteristics (i.e. size, return on assets, asset tangibility, leverage, and cash-flow volatility) already illustrated in Section 3.2. The results are displayed in Table 10. Overall, they are very close to those of Table 9. While matching does not deal with selection issues based on unobservable characteristics, these results are reassuring as they show that our results are not driven by sample selection based on observables.

[Insert Table 10]

6. Is employment insurance priced by wages?

A central prediction of the implicit contract theory is that the insurance provided by firms to their employees should be “priced”, i.e., that, in exchange for more stable employment, firms should be able to pay lower wages. Using French data, Sraer and Thesmar (2007) and Bassanini et al. (2013) confirm that family firms not only stabilize employment but also pay lower wages. Applied to our international panel, this prediction has a sharp implication: the wage discount that family firms enjoy should be higher the less generous the public unemployment insurance. Conversely, if they receive generous support for the social security system during unemployment spells, workers value firm-provided insurance less, and are therefore less willing to accept a wage discount in exchange for it.

To test these implications, we estimate the wage equation (3): the average real wage paid by a firm in a given year is regressed on the family-firm dummy and its interactions with public unemployment security provisions, on the usual set of firm-level controls, and country-industry and country-time fixed effects. In one specification we also include firm-level fixed effects, so that we identify the family firm effect only from firms that switch between the family and the non-family status. Table 11 shows the results.

[Insert Table 11]

In the specification of Column (1), the coefficient of the family-firm dummy is negative and significant, and implies that the average real wage paid by family firms is approximately 6 to 7 percent lower than in non-family firms. This result should be taken cautiously because it could reflect unobservable skill differentials between employees of family and non-family firms: the wage discount could simply reflect the fact that on average family firms employ less skilled workers. However, interpreting this wage discount as the “price of employment stability” squares also with the finding that the price that workers are willing to pay is smaller in countries and periods in which public unemployment insurance is more generous: the estimated coefficient of the interaction of the family-firm dummy with public unemployment security shows that the wage discount is smaller when the social security system provides stronger protection against unemployment. This squares with our earlier finding that in these circumstances family firms offer less employment insurance, and so benefit from a lower wage discount: both the quantity and the price of the insurance provided by family firms decline as the government provides more insurance. These results are confirmed when we control for financial development (Column 2).

To address unobserved heterogeneity in workforce composition, the specification shown in Column 3 includes also firm fixed effects. This is a very demanding specification, as we identify the family-firm effect only from firms switching status. In fact, when a firm switches from non-family to family, the downward adjustment in wages might require time to realize, given nominal wage rigidity: this estimate should therefore be interpreted as a lower bound of the overall effect. Indeed, the coefficient drops to 2%, and is significant only at the 10% level. However, even in this specification we find that the wage discount that family firms enjoy decreases with public insurance, consistently with the central finding of our analysis. Finally, in Column (4) we estimate on the sample of large reforms the specification that also includes the interaction between country

dummies and the family-firm dummy, to control for potential fixed country characteristics that might differentially affect the level of wages in family firms and be correlated with unemployment security. Even with these additional controls, the wage discount that family firms obtain decreases as the degree of public unemployment security increases.

Interestingly, the finding that firms providing less employment insurance pay higher real wages is not confined to the comparison between family and non-family firms, but holds more generally in our sample. This is shown in Figure 5, which plots each firm's average real wages against its own pass-through coefficient, i.e. the sensitivity of its employment to idiosyncratic sales shocks. More precisely, the measure plotted on vertical axis is the residual of a cross-sectional regression of the average real wage on country, time and industry fixed effects (in order to control for country-, time- and industry-related variability in real wages), and the measure shown on the horizontal axis is a firm-level estimate of the elasticity of employment to sales shocks.¹⁹ The relationship is clearly positive, suggesting that firms whose employment responds more sharply to sales shocks compensate their employees with higher wages. The fitted line is obtained from a regression of the firm-level wage regression residuals (on the vertical axis) on a constant and on the firm-level coefficient of employment sensitivity to idiosyncratic shocks (on the horizontal axis). The t-statistic of the estimated slope coefficient of this regression is 26.07. This confirms that the employment insurance provided by firms is valued by workers and priced accordingly: the higher the insurance, the higher the wage discount.

[Insert Figure 5]

7. Conclusion

This paper inquires if and to what extent the implicit insurance provided by firms to their employees substitutes for the unemployment insurance provided by the social security system. We investigate this issue using a panel of firm-level data from 41 countries: we rely on differences between family and non-family firms to identify the supply of

¹⁹ The firm-specific “pass-through coefficients” θ_i are obtained by estimating the following regression for the employment growth of each firm i : $\Delta n_{it} = \theta_0 + \theta_i \varepsilon_{it} + \gamma_i' X_{it-1} + \xi_{it}$, where ε_{it} is the sales shock, X_{it-1} is a vector of lagged firm-specific variables, and ξ_{it} is the error term.

insurance, and on differences among national social security programs to gauge workers' demand for insurance.

Our evidence shows that family firms provide more employment protection than non-family firms, but do so less in countries where the social security system provides more generous unemployment insurance. We also find that the employment protection provided by family firms is priced: their employees earn 6 percent less on average, controlling for country, industry and time effects. Moreover, family firms also obtain a larger wage discount when public unemployment insurance is less generous, so that employees are more eager to obtain the additional employment stability that they can offer. Hence, the evidence is consistent with the view that private and public provisions of employment insurance are substitutes.

References

- Agrawal, Ashwini K., and David A. Matsa (2013), “Labor Unemployment Risk and Corporate Financing Decisions,” *Journal of Financial Economics* 108, 449–470.
- Aleksynska, Mariya, and Martin Schindler (2011), “Labor Market Regulations in Low-, Middle- and High-Income Countries: A New Panel Database,” IMF Working Paper No. 11/154.
- Altman, Edward I. (1968), “Financial Ratios, Discriminant Analysis, and the Prediction of Corporate Bankruptcy,” *Journal of Finance* 23, 589–609.
- Arellano, Manuel, and Bond Stephen (1991), “Some Tests of Specification for Panel Data: Monte Carlo Evidence and an Application to Employment Equations,” *Review of Economic Studies* 58(2), 277-97.
- Azariadis, Costas (1975) “Implicit Contracts and Underemployment Equilibria,” *Journal of Political Economy* 83, 1183-12002.
- Bach, Laurent, and Nicolas Serrano-Velarde (2015), “CEO Identity and Labor Contracts: Evidence from CEO Transitions,” *Journal of Corporate Finance* 33, 227–242.
- Baily, Martin Neil (1974), “Wages and Employment under Uncertain Demand,” *Review of Economic Studies* 41, 37-50.
- Bassanini, Andrea, Eve Caroli, Antoine Reberieux, and Thomas Breda (2013), “Working in Family Firms: Less Paid but More Secure? Evidence from French Matched Employer-Employee Data,” *Industrial and Labor Relations Review* 66, 433-466.
- Becker, Bo, and Victoria Ivashina (2014), “Cyclicality of Credit Supply: Firm Level Evidence,” *Journal of Monetary Economics* 62(C), 76-93.
- Bennedsen, Morten, Sterling Huang, Hannes Wagner and Stefan Zeume S. (2015), “Family firms and labor market regulation,” INSEAD Working Paper No. 2014/62/EPS.
- Berk, Jonathan B., and Johan Walden (2013), “Limited Capital Market Participation and Human Capital Risk,” *Review of Asset Pricing Studies* 3(1), 1-37.

- Brav, Alon, John Graham, Campbell Harvey, and Roni Michaely (2005), “Payout Policy in the 21st Century,” *Journal of Financial Economics* 77, 483–527.
- Browning, Martin, and Thomas F. Crossley (2001), “Unemployment Insurance Levels and Consumption Changes,” *Journal of Public Economics* 80(1), 1-23.
- Browning, Martin, and Thomas F. Crossley (2009), “Shocks, stocks and socks: smoothing consumption over a temporary income loss,” *Journal of the European Economic Association*, 7(6), 1169-1192.
- Bryson, Alex, Harald Dale-Olsen and Trygve Gulbrandsen (2016), “Family Ownership, Workplace Closure and the Recession,” IZA Discussion Paper No. 9877.
- Caggese, Andrea, and Vicente Cuñat (2008), “Financing Constraints and Fixed-Term Employment Contracts,” *Economic Journal* 118, 2013-2046.
- Cardoso, Ana Rute, and Miguel Portela (2009), “Micro Foundations for Wage Flexibility: Wage Insurance at the Firm Level,” *Scandinavian Journal of Economics* 111(1), 29-50.
- Claessens, Stijn, Simeon Djankov, and Larry H. P. Lang (2000), “The Separation of Ownership and Control in East Asian Corporations”, *Journal of Financial Economics*, 58, 81-112.
- D’Aurizio, Leandro, and Livio Romano (2013), “Family Firms and the Great Recession: Out of Sight, Out of Mind?” Bank of Italy Working Paper No. 905, April.
- Ellul, Andrew, Marco Pagano, and Fausto Panunzi (2010), “Inheritance Law and Investment in Family Firms,” *American Economic Review* 100(5), 2414-450.
- Faccio, Maria, and Larry P.H. Lang (2002), “The Ultimate Ownership of Western European Corporations”, *Journal of Financial Economics* 65, 365-395.
- Gamber, Edward N. (1988), “Long-Term Risk-Sharing Wage Contracts in an Economy Subject to Permanent and Temporary Shocks,” *Journal of Labor Economics* 6, 83-99.
- Gruber, Jonathan (1997), “The Consumption Smoothing Benefits of Unemployment Insurance,” *American Economic Review*, 87(1), 192-205.

- Guertzgen, Nicole (2013), "Wage Insurance within German Firms: Do Institutions Matter?" *Journal of the Royal Statistical Society - Series A*, forthcoming.
- Guiso, Luigi, Luigi Pistaferri, and Fabiano Schivardi (2005), "Insurance within the Firm," *Journal of Political Economy* 113(5), 1054-1087.
- Kashyap, Anil K., Jeremy C. Stein, and Dave W. Wilcox (1993), "Monetary Policy and Credit Conditions: Evidence from the Composition of External Finance," *American Economic Review* 83(1), 78-98.
- Kátay, Gábor (2016), "Do Firms Provide Wage Insurance Against Shocks?" *Scandinavian Journal of Economics* 118 (1), 105-128
- Kim, E. Han, Ernst Maug, and Christoph Schneider (2014), "Labor Representation in Governance as an Insurance Mechanism," ECGI Finance Working Paper No. 411/2014.
- Knight, Frank H. (1921). "Risk, Uncertainty and Profit", Houghton Mifflin, New York.
- Jacobson, Louis S., Robert J. LaLonde and Daniel G. Sullivan (1993), "Earnings Losses of Displaced Workers," *American Economic Review* 83(4), 685-709.
- Laeven, Luc, and Fabian Valencia, (2012), "The use of blanket guarantees in banking crises" *Journal of International Money and Finance*, 31(5), 1220–1248.
- Lins, Karl, Paolo Volpin and Hannes Wagner (2013), "Does Family Control Matter? International Evidence from the 2008-2009 Financial Crisis," *Review of Financial Studies* 26, 2583-2619.
- Low, Hamish, Costas Meghir and Luigi Pistaferri (2010), "Wage Risk and Employment Risk over the Life Cycle," *American Economic Review* 100(4), 1432-67.
- Michelacci, Claudio, and Fabiano Schivardi (2013), "Does Idiosyncratic Business Risk Matter For Growth?" *Journal of the European Economic Association* 11(2), 343-368.
- Mueller, Holger M., and Thomas Philippon (2011), "Family Firms and Labor Relations," *American Economic Journal: Macroeconomics* 3(2), 218-45.

- Sharpe, Steven A. (1994), "Financial Market Imperfections, Firm Leverage, and the Cyclicity of Employment", *American Economic Review* 84 (4), 1060-1074.
- Shleifer, Andrei and Lawrence H. Summers (1988), "Breach of Trust in Hostile Takeovers," in *Corporate Takeovers: Causes and Consequences*, A. J. Auerbach, ed., University of Chicago Press, 33-68.
- Sraer, David, and David Thesmar (2007), "Performance and Behavior of Family Firms: Evidence From the French Stock Market" 5(4), *Journal of the European Economic Association*.
- Topel, Robert H., and Welch, Finis (1980), "Unemployment Insurance: Survey and Extensions," *Economica* 47, 351-379.
- Topel, Robert H. (1983), "On Layoffs and Unemployment Insurance," *American Economic Review* 73(4), 541-559.
- Topel, Robert H. (1984), "Equilibrium Earnings, Turnover, and Unemployment: New Evidence," *Journal of Labor Economics* 2(4), 500-522.

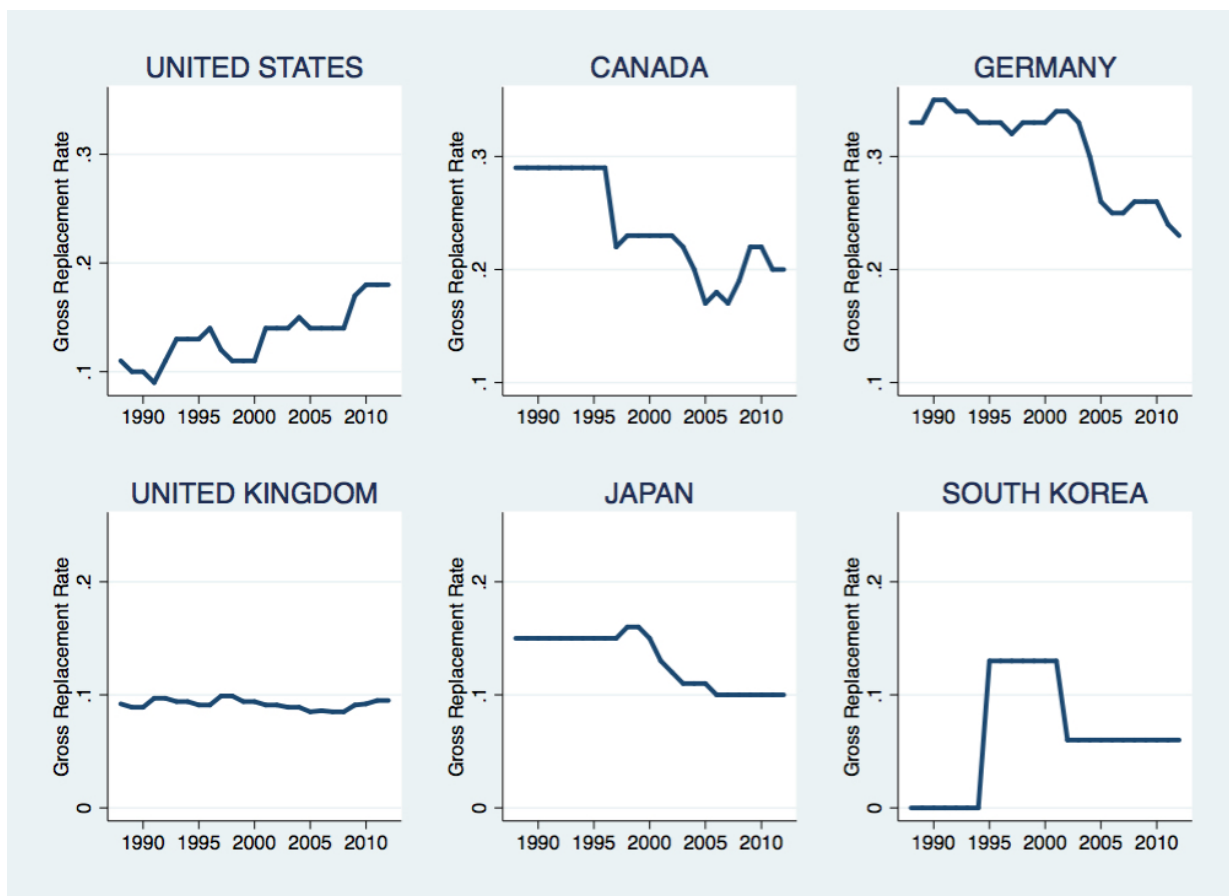


Figure 1. Gross Replacement Rates for the Six Major Countries by Continent

The figure shows the gross replacement rates for the two countries with the largest number of firms in each of three continents: the United States and Canada (for the Americas), Germany and the United Kingdom (for Europe), and Japan and South Korea (for Asia). Gross replacement rates (GRR) are calculated as the ratio of the unemployment insurance benefits received by a worker in the first two years of unemployment to the worker's last gross earnings.

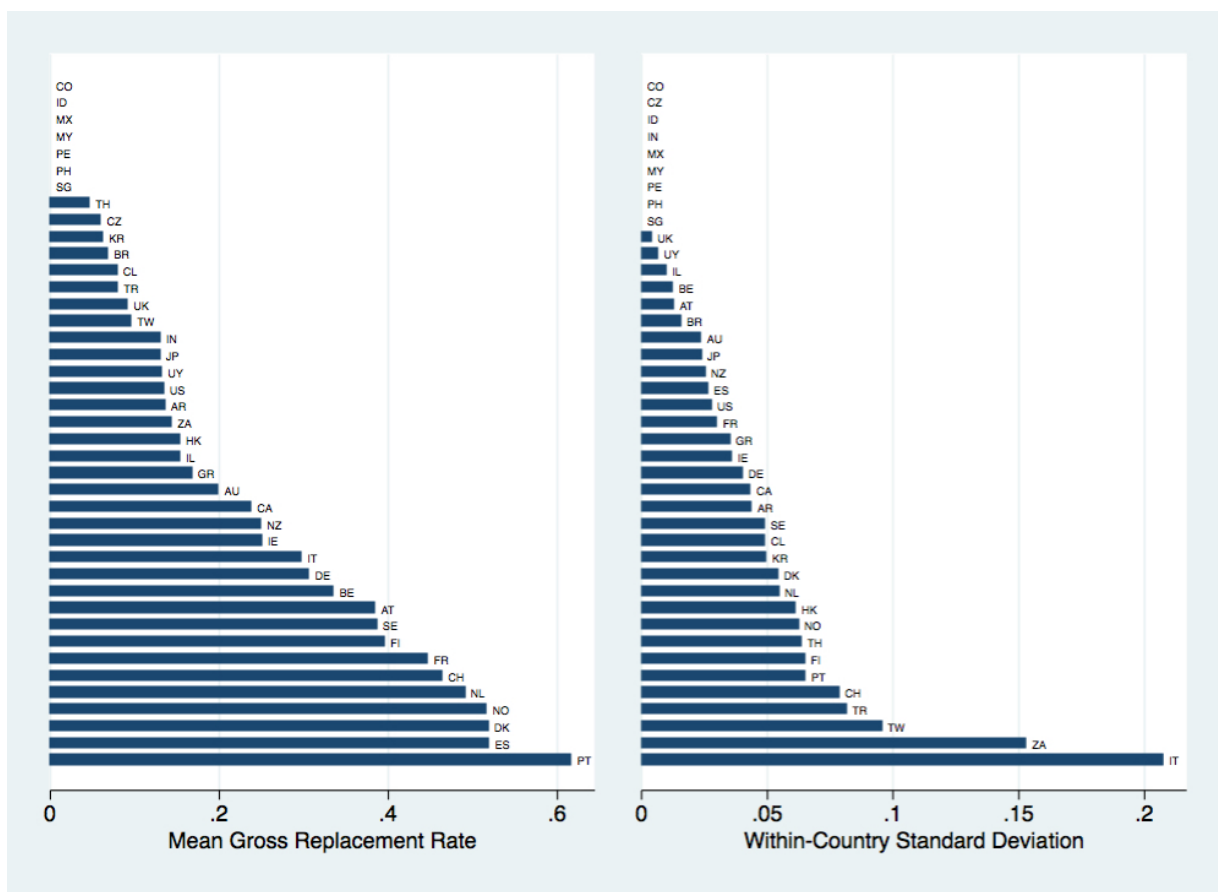


Figure 2. Mean and Standard Deviation of the Gross Replacement Rates, by Country

The figure shows the within-country time-average (left panel) and standard deviation (right panel) of the gross replacement rates for all the countries in our sample over the period 1988-2013. Gross replacement rates are calculated as the ratio of the unemployment insurance benefits received by a worker in the first two years of unemployment to the worker's last gross earnings.

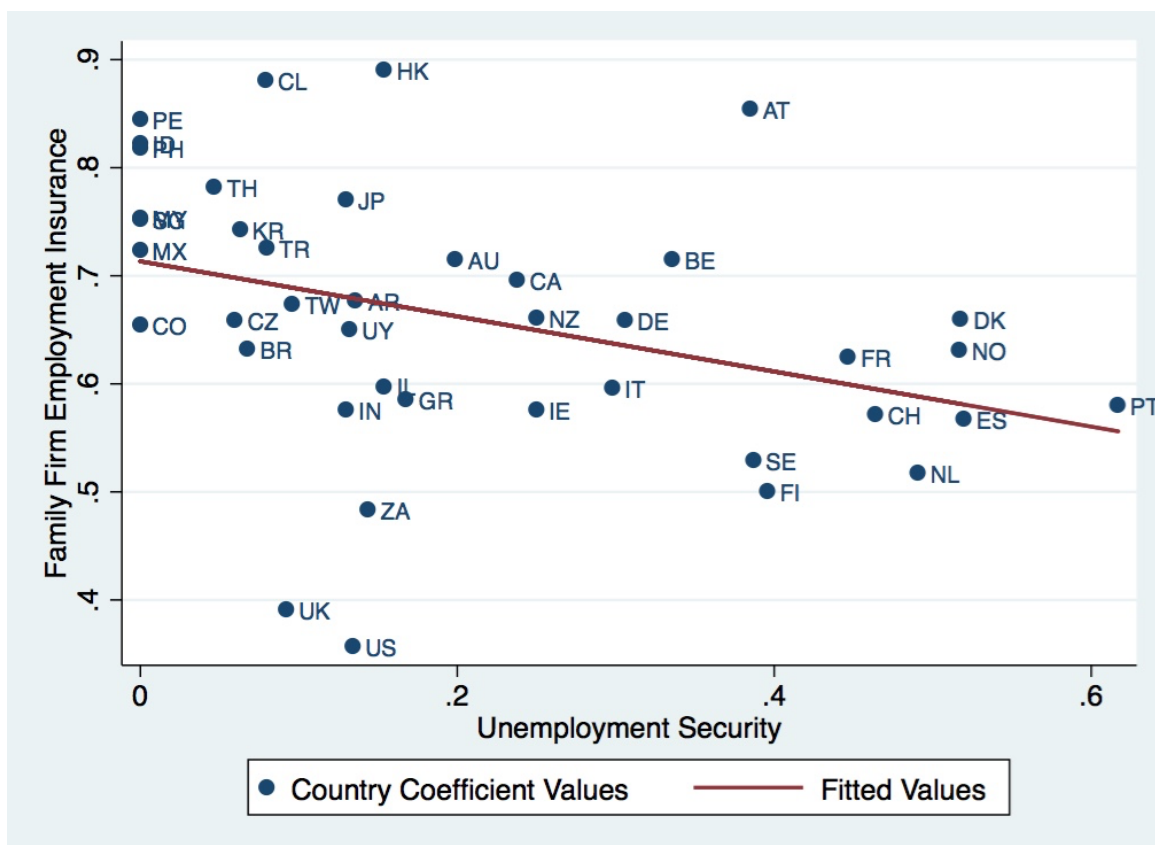


Figure 3. Employment Insurance in Family Firms and Public Unemployment Security

The measure shown on the vertical axis is a country-level measure of employment insurance provided by family firms, namely the fraction of the sales shocks that family firms do not transmit to employment. The variable measured on the horizontal axis is the unemployment security provided by the public sector of each country, as measured by the respective gross replacement rate, i.e. the ratio of the unemployment insurance benefits received in the first two years of unemployment to the worker's last gross earnings.

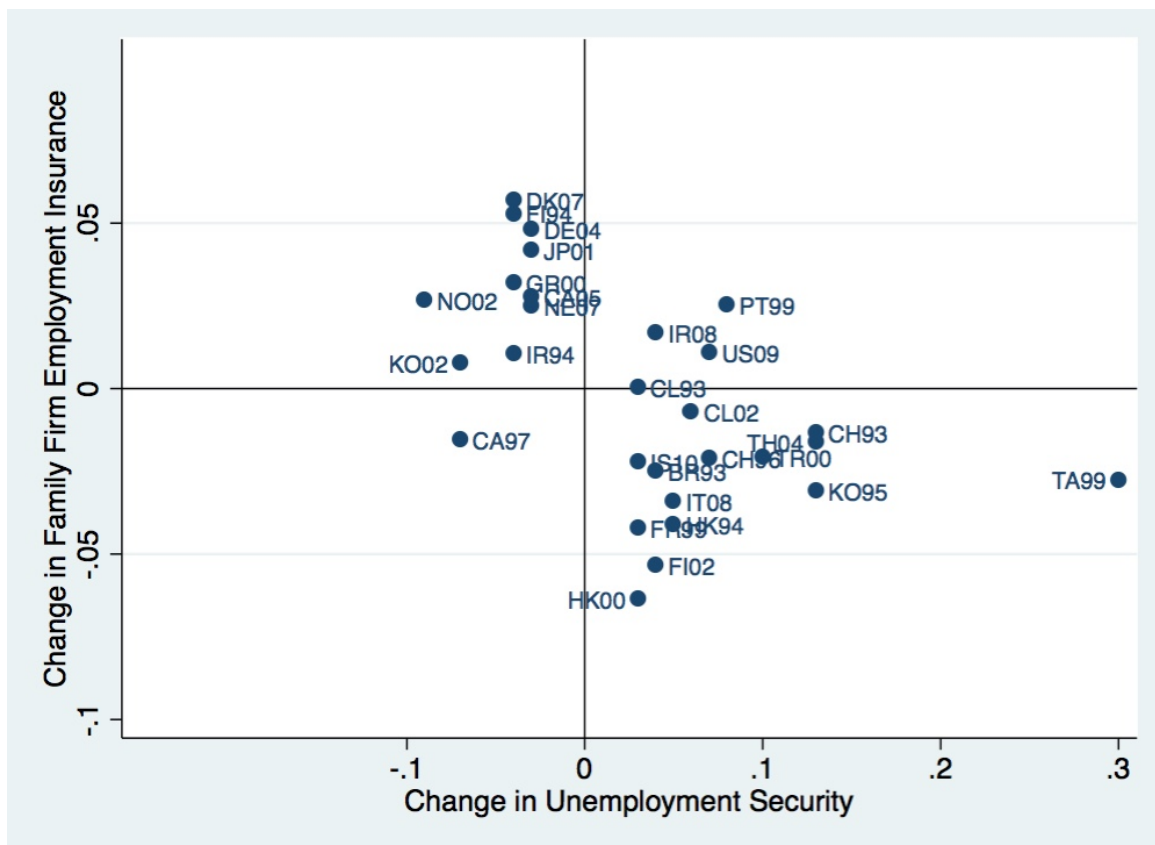


Figure 4. Employment Insurance in Family Firms Following Major Reforms in Unemployment Security

The variable shown on the vertical axis is the change in our estimate of the employment insurance provided by family firms between the 5 years before the reform and the subsequent 5 years (discarding reforms for which less than 5 years of data before and after are available, to have enough data points for the estimates). The variable measured on the horizontal axis is the country-level change in public unemployment security triggered by a reform in a given country, as measured by the change in the respective gross replacement rate between the year before the reform and the year after it.

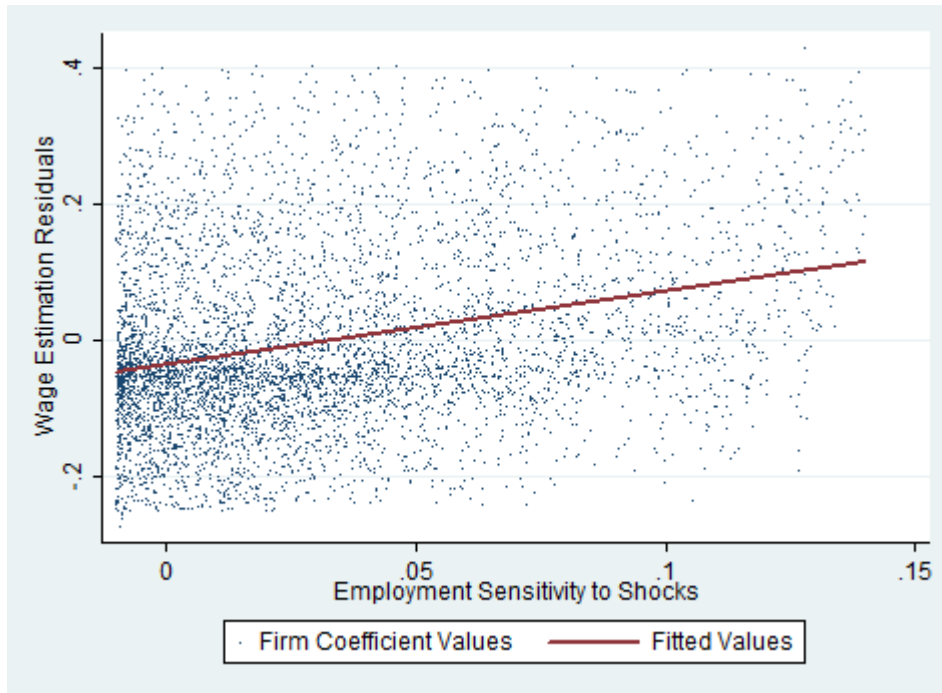


Figure 5. Employment Sensitivity to Firm-Level Sale Shocks and Average Real Wage

The variable shown on the vertical axis is the residual of a cross-sectional regression of the average real wage on fixed country, time and industry fixed effects. The measure reported on the horizontal axis is a firm-level estimate of the “pass-through” coefficient, i.e. the sensitivity of employment to the unexpected component of firm-level sales, controlling for country-industry and time fixed effects and for firm-level variables.

Table 1. Descriptive Statistics

Column 1 reports the number of non-family firms in each country in our sample. Column 2 reports the number of family firms in each country in our sample. Columns 3 and 4 report the average annual sales growth of non-family and family firms respectively, over the sample period from 1988 to 2013. Columns 5 and 6 report the average total firm-level number of employees of non-family and family firms respectively, over the same sample period. Column 7 reports the average (over time) gross replacement rate (GRR), calculated as the ratio of the unemployment insurance benefits received by a worker in the first two years of unemployment to the worker's last gross wage in each country of the sample, using the method of Aleksynska and Schindler (2011). Column 8 reports the coefficient of variation of the gross replacement rate, i.e. the ratio of its standard deviation for each country divided by the respective mean.

	Number of Non- Family Firms	Number of Family Firms	Sales Growth of Non- Family Firms	Sales Growth of Family Firms	Employment of Non- Family Firms	Employment of Family Firms	Gross Replacement Rates (GRR)	Coefficient of Variation of GRR
	(1)	(2)	(3)	(4)	(5)	(6)	(7)	(8)
Argentina	9	18	0.074	0.088	3,859	2,207	0.136	0.324
Australia	393	102	0.091	0.121	6,540	1,844	0.199	0.118
Austria	39	27	0.102	0.090	4,843	2,881	0.385	0.037
Belgium	30	21	0.082	0.097	5,073	2,948	0.336	0.034
Brazil	33	76	0.105	0.142	9,135	3,122	0.068	0.231
Canada	296	53	0.072	0.084	9,571	3,025	0.238	0.185
Chile	12	19	0.121	0.131	3,601	1,949	0.079	0.644
Colombia	8	14	0.098	0.140	3,102	1,822	0.000	.
Czech Republic	15	14	0.101	0.122	3,218	1,043	0.060	0.000
Denmark	40	25	0.078	0.067	4,929	2,186	0.518	0.107
Finland	63	53	0.092	0.102	6,011	2,107	0.396	0.160
France	312	179	0.097	0.078	10,092	6,090	0.447	0.069
Germany	349	210	0.110	0.093	12,057	6,221	0.306	0.134
Greece	8	19	0.046	0.051	3,214	1,879	0.168	0.211
Hong Kong	38	78	0.120	0.147	7,180	8,085	0.154	0.397
India	102	97	0.145	0.138	8,217	6,149	0.130	0.000
Indonesia	11	19	0.076	0.102	3,218	3,409	0.000	.
Ireland	49	11	0.065	0.056	5,045	2,110	0.250	0.145
Israel	49	57	0.092	0.081	4,379	2,815	0.154	0.067
Italy	61	95	0.078	0.070	9,021	5,144	0.298	0.701
Japan	798	104	0.092	0.067	11,207	2,135	0.130	0.187
Malaysia	16	34	0.074	0.052	3,745	2,497	0.000	.

Mexico	29	48	0.092	0.052	9,441	5,901	0.000	.
Netherlands	52	27	0.082	0.061	9,624	7,280	0.491	0.114
New Zealand	27	8	0.113	0.070	2,724	1,244	0.250	0.102
Norway	80	40	0.094	0.094	3,598	1,655	0.517	0.120
Peru	8	10	0.081	0.086	1,605	982	0.000	.
Philippines	28	41	0.087	0.104	3,072	1,805	0.000	.
Portugal	22	30	0.049	0.061	3,833	1,788	0.617	0.108
Singapore	21	34	0.140	0.146	9,314	5,211	0.000	.
South Africa	29	15	0.118	0.085	6,221	2,519	0.144	1.071
South Korea	96	154	0.123	0.131	6,512	8,912	0.063	0.792
Spain	195	143	0.102	0.072	9,771	5,209	0.520	0.051
Sweden	92	57	0.091	0.083	9,283	7,081	0.387	0.131
Switzerland	119	59	0.099	0.080	11,409	7,108	0.464	0.172
Taiwan	65	56	0.141	0.118	5,740	4,911	0.096	0.991
Thailand	39	72	0.098	0.131	4,976	3,192	0.047	1.372
Turkey	36	16	0.102	0.115	4,287	2,210	0.080	1.016
United Kingdom	722	111	0.075	0.086	10,956	1,540	0.092	0.047
United States	1065	101	0.072	0.082	15,972	1,580	0.134	0.210
Uruguay	7	12	0.081	0.103	1,091	822	0.132	0.052
Number of Firms	5,463	2,359						
Average Values			0.093	0.095	6,504	3,478	0.207	0.295

**Table 2. Employment Insurance in Family and Non-Family Firms
in Response to Shocks in Industry Sales**

The table presents estimates of a pooled regression for 7,822 firms from 41 countries over the period 1988-2013. The dependent variable is the yearly change in the logarithm of total employment of firm i in year t . Shock is measured as the yearly change of log sales of each industry j in year t excluding the log sales of firm i from the calculation; Family is a dummy that takes the value of 1 if the firm i 's ultimate blockholder is a family blockholder who is present in the firm's management, and 0 otherwise; Unemployment Security is the gross replacement rate in each country, calculated as the ratio of the unemployment insurance benefits received by a worker in the first two years of unemployment to the worker's last gross earnings; Financial Development is the ratio of stock market capitalization to GDP; Firm-level Control Variables are the following: Firm Size is the log of market capitalization of each firm i in year $t-1$; Return on Assets is the return on total assets of each firm i in year $t-1$; Asset Tangibility (the ratio of Plant, Property and Equipment to Total Assets of each firm i in year $t-1$); and Leverage (the ratio of total debt to total assets of each firm i in year $t-1$). The estimates shown in Columns 1-3 and 5 are obtained by estimating the regression on the full sample period. The estimates shown in Column 4 are obtained by estimating the regression on the sample years with negative shocks to industry sales. The estimates shown in Column 6 are obtained by estimating the regression on the sample years surrounding large reforms of the gross replacement rate. T-statistics are reported in parenthesis. Standard errors are clustered at the country level. Asterisks (*, ** and ***) indicate statistical significance (at the 10%, 5% and 1% level, respectively).

	(1) Full Sample	(2) Full Sample	(3) Full Sample	(4) Negative Shocks	(5) Full Sample	(6) Large Reforms
Shock	0.1425*** (2.91)	0.1418*** (2.85)	0.1488** (2.31)	0.2052*** (3.14)		
Shock × Family	-0.1194** (-2.58)	-0.1095** (-2.37)	-0.1192** (-2.08)	-0.1861** (-2.68)		
Shock × Unemployment Security	0.0297 (0.91)	0.0265 (0.73)	0.0281 (0.67)	0.0391 (0.89)	0.0372 (0.58)	-0.0577 (-0.98)
Shock × Family × Unemployment Security	0.0897** (2.47)	0.0865** (2.45)	0.0897** (2.09)	0.1107** (1.99)	0.1502** (2.62)	0.1659*** (2.72)
Family	0.0042 (0.75)	0.0038 (0.74)	-0.0029 (-0.31)			
Family × Unemployment Security	-0.0012 (-0.35)	-0.0014 (-0.32)	0.0051 (0.41)	-0.0068 (-0.29)	0.0052 (0.24)	-0.0048 (-0.80)
Shock × Financial Development		0.0025 (0.62)				
Family × Financial Development		-0.0018 (-0.87)				
Shock × Family × Financial Development		-0.0034 (-1.56)				
Firm-Level Controls	Yes	Yes	Yes	Yes	Yes	Yes
Firm Fixed Effects	No	No	Yes	Yes	Yes	Yes
Country × Industry Effects	Yes	Yes	No	No	No	No
Country × Time Effects	Yes	Yes	Yes	Yes	Yes	Yes
Family × Country Effects	No	No	No	No	Yes	Yes
Shock × Country Effects	No	No	No	No	Yes	Yes
Shock × Family × Country Effects	No	No	No	No	Yes	Yes
R²	0.28	0.30	0.38	0.29	0.45	0.41
Number of Observations	124,432	124,432	124,432	30,122	124,432	54,582

**Table 3. Employment Insurance in Family and Non-Family Firms
in Response to Idiosyncratic Shocks in Firm Sales**

The table presents estimates of a pooled regression for 7,822 firms from 41 countries over the period 1988-2013. The dependent variable is the yearly change in the logarithm of total employment of firm i in year t . Shock is the residual from a first-stage GMM regression estimated with the Arellano-Bond method, whose dependent variable is the first difference of the log of sales of firm i in year t ; Family is a dummy that takes the value of 1 if the firm i 's ultimate blockholder is a family blockholder who is present in the firm's management, and 0 otherwise; Unemployment Security is the gross replacement rate in each country, calculated as the ratio of the unemployment insurance benefits received by a worker in the first two years of unemployment to the worker's last gross earnings; Financial Development is the ratio of stock market capitalization to GDP; Firm-level Control Variables are the following: Firm Size is the log of market capitalization of each firm i in year $t-1$; Return on Assets is the return on total assets of each firm i in year $t-1$; Asset Tangibility (the ratio of Plant, Property and Equipment to Total Assets of each firm i in year $t-1$); and Leverage (the ratio of total debt to total assets of each firm i in year $t-1$). The estimates shown in Columns 1-3 and 5 are obtained by estimating the regression on the full sample period. The estimates shown in Column 4 are obtained by estimating the regression on the sample years with negative idiosyncratic shocks. The estimates shown in Column 6 are obtained by estimating the regression on the sample years surrounding large reforms of the gross replacement rate. Bootstrapped standard errors clustered at the country level are used in each specification. T-statistics are reported in parenthesis. Asterisks (*, ** and ***) indicate statistical significance (at the 10%, 5% and 1% level, respectively).

	(1) Full Sample	(2) Full Sample	(3) Full Sample	(4) Negative Shocks	(5) Full Sample	(6) Large Reforms
Shock	0.2685*** (3.22)	0.2419*** (3.08)	0.2729*** (3.27)	0.3168*** (3.58)		
Shock × Family	-0.2261** (-2.41)	-0.2079** (-2.20)	-0.2461** (-2.11)	-0.2892** (-2.43)		
Shock × Unemployment Security	0.057* (1.76)	0.0491 (1.61)	0.0186 (1.24)	0.0342 (1.32)	0.0292 (1.28)	-0.0111 (-0.79)
Shock × Family × Unemployment Security	0.1251** (2.18)	0.1106** (2.02)	0.1487** (2.11)	0.1604** (2.32)	0.2572*** (2.86)	0.2292*** (2.77)
Family	0.0050 (0.76)	0.0062 (0.79)	-0.0145 (-0.54)			
Family × Unemployment Security	-0.0022 (-0.21)	-0.0010 (-0.37)	0.0015 (0.11)	0.0034 (0.48)	-0.0041 (-0.21)	-0.0028 (-0.21)
Shock × Financial Development		0.0021* (1.82)				
Family × Financial Development		-0.0008 (-0.75)				
Shock × Family × Fin. Development		-0.0039* (-1.77)				
Firm-Level Controls	Yes	Yes	Yes	Yes	Yes	Yes
Firm Fixed Effects	No	No	Yes	Yes	Yes	Yes
Country × Industry Effects	Yes	Yes	No	No	No	No
Country × Time Effects	Yes	Yes	Yes	Yes	Yes	Yes
Family × Country Effects	No	No	No	No	Yes	Yes
Shock × Country Effects	No	No	No	No	Yes	Yes
Shock × Family × Country Effects	No	No	No	No	Yes	Yes
R²	0.32	0.36	0.37	0.37	0.46	0.44
Number of Observations	124,432	124,432	124,432	35,572	124,432	54,582

Table 4. Employment Insurance in Response to Idiosyncratic Shocks, in a Matched Sample of Family and Non-Family Firms

The table presents estimates of a pooled regression model for family firms and their non-family matches from 41 countries over the period 1988-2013. We match each family firm with non-family firms using a propensity-score matching methodology based on firm characteristics (firm size, return on assets, asset tangibility, leverage, cash-flow volatility, and the country of incorporation and industry classification) as the matching variables. The dependent variable is the yearly change in the logarithm of total employment of firm i in year t . Shock is the residual from a first-stage GMM regression estimated with the Arellano-Bond method, whose dependent variable is the first difference of the log of sales of firm i in year t . The other independent variables are as follows: Family is a dummy that takes the value of 1 if the firm i 's ultimate blockholder is a family blockholder which is present in the firm's management and 0 otherwise; Unemployment Security is the gross replacement rate in each country, calculated as the ratio of the unemployment insurance benefits received by a worker in the first two years of unemployment to the worker's last gross earnings; Firm-level Control Variables are the following: Firm Size is the log of market capitalization of each firm i in year $t-1$; Return on Assets is the return on total assets of each firm i in year $t-1$; Asset Tangibility (the ratio of Plant, Property and Equipment to Total Assets of each firm i in year $t-1$); and Leverage (the ratio of total debt to total assets of each firm i in year $t-1$). The estimates shown in Columns 1-3 and 5 are obtained by estimating the regression on the full sample period. The estimates shown in Column 4 are obtained by estimating the regression on the sample years with negative idiosyncratic shocks. The estimates shown in Column 6 are obtained by estimating the regression on the sample years surrounding large reforms of the gross replacement rate. Bootstrapped standard errors clustered at the country level are used to compute the T-statistics reported in parenthesis. Asterisks (*, ** and ***) indicate statistical significance (at the 10%, 5% and 1% level, respectively).

	(1) Full Sample	(2) Full Sample	(3) Full Sample	(4) Negative Shocks	(5) Full Sample	(6) Large Reforms
Shock	0.2489** (2.53)	0.2397** (2.46)	0.2132** (2.08)	0.2859** (2.60)		
Shock × Family	-0.2192** (-2.21)	-0.2043** (-2.09)	-0.1901* (1.92)	-0.2605** (-2.35)		
Shock × Unemployment Security	0.0358 (1.09)	0.0345 (1.27)	0.0427 (1.09)	-0.0292 (-0.81)	0.0511 (1.29)	0.0488 (1.16)
Shock × Family × Unemployment Security	0.1239** (2.29)	0.1092** (1.99)	0.0906* (-1.91)	0.1247** (-2.42)	0.2328** (2.51)	0.2921*** (3.15)
Family × Unemployment Security	0.0082 (1.02)	0.0077 (0.97)	-0.0052 (-0.26)			
Family × Unemployment Security	-0.0007 (-0.32)	-0.0019 (-0.49)	-0.0022 (-0.32)	0.0031 (0.62)	-0.0008 (-0.36)	-0.0005 (-0.23)
Shock × Financial Development		0.0008 (1.36)				
Family × Financial Development		0.0009 (1.41)				
Shock × Family × Financial Development		-0.0032* (-1.79)				
Firm-Level Controls	Yes	Yes	Yes	Yes	Yes	Yes
Firm Fixed Effects	No	No	Yes	Yes	Yes	Yes
Country × Industry Effects	Yes	Yes	No	No	No	No
Country × Time Effects	Yes	Yes	Yes	Yes	Yes	Yes
Family x Country Effects	No	No	No	No	Yes	Yes
Shock × Country Effects	No	No	No	No	Yes	Yes
Shock × Family x Country Effects	No	No	No	No	Yes	Yes
R²	0.31	0.37	0.39	0.42	0.44	0.42
Number of Observations	93,201	93,201	93,201	25,908	93,201	42,011

Table 5. Employment Insurance within Family and Non-Family Firms in Response to Idiosyncratic Shocks in Firm Sales

The table presents estimates of a panel regression model for family firms only, shown in Columns 1-3, and non-family firms only, shown in Columns 4-6. The firms come from 41 countries over the period 1988-2013. The dependent variable is the yearly change in the logarithm of total employment of firm i in year t . Shock is the residual from a first-stage GMM regression estimated with the Arellano-Bond method, whose dependent variable is the first difference of the log of sales of firm i in year t ; Family Firm is a dummy that takes the value of 1 if the firm i 's ultimate blockholder is a family blockholder who is present in the firm's management, and 0 otherwise; Unemployment Security is the gross replacement rate in each country, calculated as the ratio of the unemployment insurance benefits received by a worker in the first two years of unemployment to the worker's last gross earnings; Financial Development is the ratio of stock market capitalization to GDP; Firm-level Control Variables are the following: Firm Size is the log of market capitalization of each firm i in year $t-1$; Return on Assets is the return on total assets of each firm i in year $t-1$; Asset Tangibility (the ratio of Plant, Property and Equipment to Total Assets of each firm i in year $t-1$); and Leverage (the ratio of total debt to total assets of each firm i in year $t-1$). The estimates shown in Columns 1 and 4 are obtained by estimating the regression on the full sample period. The estimates shown in Columns 2 and 5 are obtained by estimating the regression on the sample years with negative idiosyncratic shocks. The estimates shown in Column 3 and 6 are obtained by estimating the regression on the sample years surrounding large reforms of the gross replacement rate. Bootstrapped standard errors clustered at the country level are used in each specification. T-statistics are reported in parenthesis. Asterisks (*, ** and ***) indicate statistical significance (at the 10%, 5% and 1% level, respectively).

	(1)	(2)	(3)	(4)	(5)	(6)
	Full Sample	Family Negative Shocks	Large Reforms	Full Sample	Non-Family Negative Shocks	Large Reforms
Shock	0.0125 (1.12)	0.0174 (1.51)		0.3022*** (3.65)	0.3421*** (4.18)	
Shock × Unemployment Security	0.1082*** (2.91)	0.1197*** (2.89)	0.1508*** (3.45)	0.0149 (1.52)	0.0095 (1.48)	0.0212 (1.60)
Firm-Level Controls	Yes	Yes	Yes	Yes	Yes	Yes
Firm Fixed Effects	Yes	Yes	Yes	Yes	Yes	Yes
Country × Time Effects	Yes	Yes	Yes	Yes	Yes	Yes
Shock × Country Effects	No	No	Yes	No	No	Yes
R²	0.35	0.21	0.24	0.44	0.28	0.31
Number of Observations	40,278	12,577	22,102	84,154	22,995	32,196

Table 6. Employment Insurance in Family and Non-Family Firms in Response to Transitory and Persistent Idiosyncratic Shocks

This table presents the estimates of the sensitivity of employment to persistent and temporary shocks in sales for 7,822 firms from 41 countries over the period from 1988 to 2013. The dependent variable is the yearly change in the logarithm of total employment of firm i in year t . The coefficient estimates are obtained via two separate IV regressions, which identify the sensitivity to transitory shocks (Column 1) and to persistent ones (Column 2) respectively (see the appendix for details). The independent variables are as follows: Transitory Shock is the transitory component of the change in sales of firm i ; Persistent Shock is the persistent component of the change in sales of firm i ; Family Firm is a dummy that takes the value of 1 if the firm i 's ultimate blockholder is a family blockholder who is present in the firm's management, and 0 otherwise; Unemployment Security is the gross replacement rate in each country, calculated as the ratio of the unemployment insurance benefits received by a worker in the first two years of unemployment to the worker's last gross earnings; Firm-level Control Variables are the following: Firm Size is the log of market capitalization of each firm i in year $t-1$; Return on Assets is the return on total assets of each firm i in year $t-1$; Asset Tangibility (the ratio of Plant, Property and Equipment to Total Assets of each firm i in year $t-1$); and Leverage (the ratio of total debt to total assets of each firm i in year $t-1$). T-statistics are reported in parenthesis. The power of the instruments is given by the p -value of the F -test on the excluded instruments. Asterisks (*, ** and ***) indicate statistical significance (at the 10%, 5% and 1% level, respectively).

	(1)	(2)
	Transitory Shocks	Permanent Shocks
Shock	0.1952*** (3.28)	0.2790*** (4.79)
Shock × Family	-0.1914*** (-2.70)	-0.0719 (-1.25)
Shock × Unemployment Security	0.0312 (0.95)	0.0277 (1.09)
Shock × Family x Unemployment Security	0.1083** (2.26)	0.0204 (0.92)
Firm-Level Control	Yes	Yes
Country×Industry Effects	Yes	Yes
Country×Time Effects	Yes	Yes
F-test (p value)	0.001<	0.001<
Number of Observations	94,987	31,445

Table 7: Employment Insurance in Banking Crises, Recessions and “Normal” Periods

The table presents estimates of a pooled regression for 7,822 firms from 41 countries over the period 1988-2011. Banking crises are defined as in Laeven and Valencia (2012). Recessions are years of negative GDP-growth in which there is no banking crisis. “Normal” periods are years with neither a banking crisis nor a recession. The specifications shown in Columns 1 and 2 are estimated using only “normal” periods, those in Columns 3 and 4 are estimated using only recession years, and those in Columns 5 and 6 using only years of banking crisis. Shock is the residual from a first-stage GMM regression estimated with the Arellano-Bond method, whose dependent variable is the first difference of the log of sales of firm i in year t ; Family is a dummy that takes the value of 1 if the firm i 's ultimate blockholder is a family blockholder who is present in the firm's management, and 0 otherwise; Unemployment Security is the gross replacement rate in each country, calculated as the ratio of the unemployment insurance benefits received by a worker in the first two years of unemployment to the worker's last gross earnings; Financial Development is the ratio of stock market capitalization to GDP; Firm-level Control Variables are the following: Firm Size is the log of market capitalization of each firm i in year $t-1$; Return on Assets is the return on total assets of each firm i in year $t-1$; Asset Tangibility (the ratio of Plant, Property and Equipment to Total Assets of each firm i in year $t-1$); and Leverage (the ratio of total debt to total assets of each firm i in year $t-1$). Bootstrapped standard errors clustered at the country level are used to compute the T-statistics reported in parenthesis. Asterisks (*, ** and ***) indicate statistical significance (at the 10%, 5% and 1% level, respectively).

	(1) (2)		(3) (4)		(5) (6)	
	“Normal” Periods		Recessions		Banking Crisis	
	Full Sample	Negative Shocks	Full Sample	Negative Shocks	Full Sample	Negative Shocks
Shock	0.2211*** (2.68)	0.2849*** (2.72)	0.2809** (2.47)	0.3415** (2.60)	0.3044*** (4.01)	0.3981** (2.53)
Shock × Family	-0.1809** (-2.26)	-0.2544** (-2.47)	-0.2511** (-2.01)	-0.2903** (-2.00)	-0.1142 (-1.57)	-0.1622* (-1.71)
Shock × Unemployment Security	0.0411 (0.77)	0.0522 (0.67)	0.0518 (0.24)	-0.0009 (-0.16)	-0.0131 (-0.58)	-0.0128 (-0.42)
Family × Unemployment Security	0.0041 (0.50)	0.0034 (0.41)	-0.0039 (-0.29)	-0.0051 (-0.11)	0.0008 (0.49)	0.0007 (0.32)
Shock × Family × Unemployment Security	0.1609** (2.58)	0.1768* (1.92)	0.1492** (2.00)	0.1642* (1.89)	0.1108* (1.84)	0.1004 (1.57)
Family	-0.0041 (-0.37)	-0.0018 (-0.28)	-0.0052 (-0.22)	0.0016 (0.19)	0.0011 (0.25)	0.0004 (0.19)
Family × Unemployment Security	0.0018 (0.35)	0.0022 (0.29)	-0.0042 (-0.31)	-0.0056 (-0.28)	-0.0008 (-0.48)	0.0007 (0.29)
Firm-Level Controls	Yes	Yes	Yes	Yes	Yes	Yes
Firm Fixed Effects	Yes	Yes	Yes	Yes	Yes	Yes
Country × Time Effects	Yes	Yes	Yes	Yes	Yes	Yes
R²	0.34	0.14	0.11	0.07	0.18	0.09
Number of Observations	69,701	15,443	11,981	7,409	27,106	10,270

Table 8. Employment Insurance: Impact on Earnings, Dividends and Cash Holdings

The table presents estimates of a pooled regression for 7,822 firms from 41 countries over the period 1988-2013. The dependent variables are as follows: in Columns 1-2 the earnings before interest and taxes of firm i in year t scaled by the previous year's total assets; in Columns 3-4 the dividend paid by firm i in year t scaled by the previous year's total assets; and in Columns 5-6 the total cash holdings of firm i in year t scaled by the previous year's total assets. Shock is the residual from a first-stage GMM regression estimated with the Arellano-Bond method, whose dependent variable is the first difference of the log of sales of firm i in year t ; Family is a dummy that takes the value of 1 if the firm i 's ultimate blockholder is a family blockholder who is present in the firm's management, and 0 otherwise; Unemployment Security is the gross replacement rate in each country, calculated as the ratio of the unemployment insurance benefits received by a worker in the first two years of unemployment to the worker's last gross earnings. Firm-level Control Variables are the following: Firm Size is the log of market capitalization of each firm i in year $t-1$; Return on Assets is the return on total assets of each firm i in year $t-1$; Asset Tangibility (the ratio of Plant, Property and Equipment to Total Assets of each firm i in year $t-1$); and Leverage (the ratio of total debt to total assets of each firm i in year $t-1$). The estimates shown in Columns 1, 3 and 5 are obtained by estimating the regression on the full sample period; those shown in Column 2, 4 and 6 are obtained by estimating the regression over the sample years with negative idiosyncratic shocks. Bootstrapped standard errors clustered at the country level are used in each specification. T-statistics are reported in parenthesis. Asterisks (*, ** and ***) indicate statistical significance (at the 10%, 5% and 1% level, respectively).

	(1)	(2)	(3)	(4)	(5)	(6)
	Earnings		Dividends		Cash	
	Full Sample	Negative Shocks	Full Sample	Negative Shocks	Full Sample	Negative Shocks
Shock	0.1861*** (2.75)	0.2650*** (3.81)	0.1215 (1.57)	0.1827** (2.24)	0.6073*** (2.75)	0.7388*** (3.41)
Shock × Family	0.0108** (2.36)	0.0158*** (3.43)	0.0056 (1.54)	0.0078** (2.07)	0.0280* (1.91)	0.0346** (2.31)
Shock × Unemployment Security	0.0015 (0.74)	0.0021 (1.01)	-0.0004 (-0.27)	0.0010 (0.80)	0.0024 (0.63)	-0.0041 (-0.21)
Family × Unemployment Security	0.0005 (0.12)	-0.0003 (-0.15)	-0.0004 (-0.27)	-0.0005 (-0.11)	0.0018 (0.15)	0.0022 (0.19)
Shock × Family × Unemployment Security	-0.0062** (-2.25)	-0.0080*** (-2.91)	-0.0026 (-0.94)	-0.0060* (-1.93)	-0.0178* (-1.92)	-0.0220** (-2.30)
Firm-Level Controls	Yes	Yes	Yes	Yes	Yes	Yes
Firm Fixed Effects	Yes	Yes	Yes	Yes	Yes	Yes
Country × Time Effects	Yes	Yes	Yes	Yes	Yes	Yes
R²	0.45	0.49	0.27	0.34	0.46	0.52
Number of Observations	124,432	35,572	124,432	35,572	124,432	35,572

**Table 9. Wage Insurance in Family and Non-Family Firms
in Response to Idiosyncratic Shocks**

This table presents the estimates of a pooled regression model for 3,290 firms from 41 countries over the period from 1988 to 2013. The dependent variable is the yearly change in the logarithm of the real average wage of firm i in year t . The independent variables are as follows: Shock is the residual from a first-stage GMM regression estimated with the Arellano-Bond method, whose dependent variable is the first difference of the log of sales of firm i in year t ; Family Firm is a dummy that takes the value of 1 if the firm i 's ultimate blockholder is a family blockholder who is present in the firm's management and 0 otherwise; Unemployment Security is the gross replacement rate in each country, calculated as the ratio of the unemployment insurance benefits received by a worker in the first two years of unemployment to the worker's last gross earnings; Firm-level Control Variables are the following: Firm Size is the log of market capitalization of each firm i in year $t-1$; Return on Assets is the return on total assets of each firm i in year $t-1$; Asset Tangibility (the ratio of Plant, Property and Equipment to Total Assets of each firm i in year $t-1$); and Leverage (the ratio of total debt to total assets of each firm i in year $t-1$). The estimates shown in Columns 1-3 and 5 are obtained by estimating the regression on the full sample period. The estimates shown in Column 4 are obtained by estimating the regression over the years in the sample with negative idiosyncratic shocks. The estimates shown in Column 6 are obtained by estimating the regression on the sample years surrounding large reforms of the gross replacement rate. Bootstrapped standard errors clustered at the country level are used to compute the T-statistics reported in parenthesis. Asterisks (*, ** and ***) indicate statistical significance (at the 10%, 5% and 1% level, respectively).

	(1) Full Sample	(2) Full Sample	(3) Full Sample	(4) Negative Shocks	(5) Full Sample	(6) Large Reforms
Shock	0.0652*** (3.49)	0.0594*** (3.12)	0.0718*** (2.81)	0.0788*** (3.11)		
Shock × Family	0.0044** (2.48)	0.0041** (2.39)	0.0052** (2.16)	0.0061** (2.39)		
Shock × Unemployment Security	-0.0263** (-2.37)	-0.0218** (-2.11)	-0.0193* (-1.87)	0.0063 (0.97)	-0.0082 (-1.12)	-0.0161 (-1.57)
Shock × Family × Unemployment Security	0.0378** (2.35)	0.0329** (2.01)	0.0201 (1.58)	0.0209 (1.42)	0.0095 (0.78)	-0.0078 (-0.94)
Family	-0.019* (-1.82)	-0.015* (-1.74)	-0.0092 (-1.48)			
Family × Unemployment Security	-0.0095 (-1.03)	-0.0087 (-1.01)	-0.0054 (-0.88)	0.0012 (0.29)	-0.0065 (-0.78)	-0.0049 (-0.74)
Shock × Financial Development		0.0002 (0.88)				
Family × Financial Development		0.0003 (1.47)				
Shock × Family × Fin. Development		-0.0004 (-1.50)				
Firm-Level Controls	Yes	Yes	Yes	Yes	Yes	Yes
Firm Fixed Effects	No	No	Yes	Yes	Yes	Yes
Country × Industry Effects	Yes	Yes	No	No	No	No
Country × Time Effects	Yes	Yes	Yes	Yes	Yes	Yes
Family × Country Effects	No	No	No	No	Yes	Yes
Shock × Country Effects	No	No	No	No	Yes	Yes
Shock × Country Effects × Family	No	No	No	No	Yes	Yes
R²	0.09	0.14	0.19	0.22	0.25	0.23
Number of Observations	49,122	49,122	49,122	14,107	49,122	21,054

Table 10. Wage Insurance in Response to Idiosyncratic Shocks, in a Matched Sample of Family and Non-Family Firms

This table presents the estimates of a pooled regression model for 3,290 firms from 41 countries over the period from 1988 to 2013 for family firms and their non-family matches. We match each family firm with non-family firms using a propensity-score matching methodology based on firm characteristics (firm size, return on assets, asset tangibility, leverage, cash-flow volatility, and the country of incorporation and industry classification) as the matching variables. The dependent variable is the yearly change in the logarithm of the real average wage of firm i in year t . The independent variables are as follows: Shock is the residual from a first-stage GMM regression estimated with the Arellano-Bond method, whose dependent variable is the first difference of the log of sales of firm i in year t ; Family Firm is a dummy that takes the value of 1 if the firm i 's ultimate blockholder is a family blockholder who is present in the firm's management, and 0 otherwise; Unemployment Security is the gross replacement rate in each country, calculated as the ratio of the unemployment insurance benefits received by a worker in the first two years of unemployment to the worker's last gross earnings; Financial Development is the ratio of stock market capitalization to GDP; Firm-level Control Variables are the following: Firm Size is the log of market capitalization of each firm i in year $t-1$; Return on Assets is the return on total assets of each firm i in year $t-1$; Asset Tangibility (the ratio of Plant, Property and Equipment to Total Assets of each firm i in year $t-1$); and Leverage (the ratio of total debt to total assets of each firm i in year $t-1$). The estimates shown in Columns 1-3 and 5 are obtained by estimating the regression on the full sample period. The estimates shown in Column 4 are obtained by estimating the regression on the sample years with negative idiosyncratic shocks. The estimates shown in Column 6 are obtained by estimating the regression on the sample years surrounding large reforms of the gross replacement rate. Bootstrapped standard errors clustered at the country level are used to compute the T-statistics reported in parenthesis. Asterisks (*, ** and ***) indicate statistical significance (at the 10%, 5% and 1% level, respectively).

	(1) Full Sample	(2) Full Sample	(3) Full Sample	(4) Negative Shocks	(5) Full Sample	(6) Large Reforms
Shock	0.0532*** (2.75)	0.0499** (2.63)	0.0564** (2.29)	0.0681** (2.58)		
Shock × Family	0.0039** (2.10)	0.0037** (1.99)	0.0044* (1.91)	0.0049* (1.84)		
Shock x Unemployment Security	-0.0194* (-1.81)	-0.0150 (-1.55)	-0.0168 (-1.35)	0.0052 (0.63)	-0.0062 (-0.71)	-0.0120 (-1.28)
Shock × Family × Unemployment Security	0.0312** (1.98)	0.0287* (1.83)	0.0141 (1.04)	0.0171 (1.19)	-0.0075 (-1.35)	-0.0071 (-1.19)
Family	-0.0122 (-1.36)	-0.0101 (-1.26)	-0.0065 (-1.08)			
Family × Unemployment Security	-0.0086 (-0.87)	-0.0067 (-0.79)	-0.0049 (-0.62)	-0.0009 (-0.18)	0.0045 (0.56)	-0.0031 (-0.47)
Shock × Financial Development		0.0002 (0.69)				
Family × Financial Development		0.0002 (0.95)				
Shock × Family × Fin. Development		-0.0003 (-1.14)				
Firm-Level Controls	Yes	Yes	Yes	Yes	Yes	Yes
Firm Fixed Effects	No	No	No	Yes	Yes	Yes
Country × Industry Effects	Yes	Yes	Yes	No	No	No
Country × Time Effects	Yes	Yes	Yes	Yes	Yes	Yes
Firm x Country Effects	No	No	Yes	Yes	Yes	Yes
Shock × Country Effects	No	No	Yes	Yes	Yes	Yes
Shock × Family x Country Effects	No	No	Yes	Yes	Yes	Yes
R²	0.10	0.13	0.16	0.14	0.18	0.09
Number of Observations	38,702	38,702	38,702	15,819	38,702	23,244

Table 11. Price of Employment Insurance in Family Firms

This table presents the estimates of a pooled regression model for 3,290 firms from 41 countries over the period from 1988 to 2013. The dependent variable is the log of the real average wage of firm i in year t . The independent variables are as follows: Family Firm is a dummy that takes the value of 1 if the firm i 's ultimate blockholder is a family blockholder who is present in the firm's management and 0 otherwise; Unemployment Security is the gross replacement rate in each country, calculated as the ratio of the unemployment insurance benefits received by a worker in the first two years of unemployment to the worker's last gross earnings; Financial Development is the ratio of stock market capitalization to GDP; Firm Size is the log of market capitalization of each firm i in year $t-1$; Asset Tangibility is the ratio of Plant, Property and Equipment to Total Assets of each firm i in year $t-1$; Return on Assets is the return on total assets of each firm i in year $t-1$; Leverage is the ratio of total debt to total assets of each firm i in year $t-1$. The estimates shown in Columns 1-3 and 5 are obtained by estimating the regression on the full sample period. The estimates shown in Column 4 are obtained by estimating the regression on the sample years surrounding large reforms of the gross replacement rate. Standard errors are clustered at the country level. T-statistics are reported in parenthesis. Asterisks (*, ** and ***) indicate statistical significance (at the 10%, 5% and 1% level, respectively).

	(1) Full Sample	(2) Full Sample	(3) Full Sample	(4) Large Reforms
Family	-0.0742** (-2.41)	-0.0652** (-2.21)	-0.0201* (-1.78)	
Family × Unemployment Security	0.0051** (2.23)	0.0044** (2.01)	0.0057** (2.48)	0.0064** (2.05)
Family × Financial Development		0.0034 (0.87)		
Firm Size	0.0499*** (2.87)	0.0452*** (2.74)	0.0409** (2.59)	0.0428** (2.20)
Asset Tangibility	0.0095* (1.87)	0.0086 (1.62)	0.0079 (1.49)	0.0082 (1.60)
Return on Assets	0.0801*** (3.21)	0.0748*** (2.89)	0.0679** (2.51)	0.0722*** (2.89)
Leverage	-0.0422 (-1.04)	-0.0798 (-0.91)	-0.0372 (-0.87)	-0.0390 (-0.92)
Firm-Level Controls	Yes	Yes	Yes	Yes
Firm Fixed Effects	No	No	Yes	Yes
Country × Industry Effects	Yes	Yes	No	No
Country × Time Effects	Yes	Yes	Yes	Yes
Family x Country Effects	No	No	No	Yes
R²	0.15	0.18	0.22	0.16
Number of Observations	49,122	49,122	49,122	21,054

Appendix A: Further Results

Table A1. Presence of Family Firms and Country Characteristics

The table presents estimates of a panel regression for 41 countries over the period 1988-2013. The dependent variable is the share of family firms over total firms (in percentage) in Columns 1-2, and share of family firms over total firms at the country-industry level (in percentage) in Columns 3-5. The estimates in Columns 1 and 4 are based on the sample of OECD countries, while those in Columns 2, 3 and 5 are based on the whole sample. Unemployment Security is the average gross replacement rate (GRR), calculated as the ratio of the unemployment insurance benefits received by a worker in the first two years of unemployment to the worker's last gross wage in each country of the sample, using the method of Aleksynska and Schindler (2011); Trust Level is measured as fraction of people in a country who state that most people in their country can be trusted and it is obtained from the different waves of the World Values Survey; Family Values is defined as the negative of the weakness of family ties, which in turn is the first principal component of the answers given to three separate questions in the World Value Surveys; EPL is the index of Employment Protection Legislation and obtained from the OECD summary indicator of the stringency of Employment Protection Legislation (obtained from the Employment Outlook publication) and different sources for non-OECD countries; Financial Market development is the ratio of stock market capitalization to GDP; Labor Market Tightness is measured as the reciprocal of the ratio of long term unemployment (persisting for one year or longer) to total unemployment (only available for the OECD countries); Unionization is defined as the share of workers affiliated to a trade union and obtained from the OECD's Employment Outlook publication and different sources for non-OECD countries. Robust standard errors are used for each specification to compute T-statistics reported in parenthesis. Asterisks (*, and **) indicate statistical significance (at the 10% and 5% level, respectively).

	(1) % of Family Firms per Country	(2) % of Family Firms per Country	(3) % of Family Firms per Country- Industry	(4) % of Family Firms per Country- Industry	(5) % of Family Firms per Country- Industry
Unemployment Security	0.1809 (0.78)	0.1955 (0.81)	0.2088* (1.72)	0.1614 (0.67)	0.1547 (0.59)
Trust Level	-0.1588 (-1.51)	-0.1143 (-1.40)		-0.0926 (-1.37)	-0.0886 (-1.15)
Family Values	0.3211* (1.72)	0.2703 (1.54)		0.3061* (1.75)	0.2579 (1.48)
EPL	0.0911 (0.86)	0.0965 (0.92)		0.0783 (0.73)	0.0859 (0.78)
Financial Market Development	-0.2418* (-1.84)	-0.2516* (-1.91)		-0.1979* (-1.83)	-0.2238* (-1.90)
Labor Market Tightness	-0.0712 (-0.56)			0.0111 (0.28)	
Unionization		0.0852 (0.70)			0.0895 (0.63)
Fixed Effects	Country	Country	-	Country- Industry	Country- Industry
Year F.E.	Yes	Yes	Yes	Yes	Yes
R²	0.15	0.16	0.11	0.18	0.19
Number of Observations	920	1,025	36,407	30,028	36,407

Table A2. Probability of Family Ownership and Firm and Country Characteristics

The table presents estimates of a linear probability model for 7,822 firms from 41 countries over the period 1988-2013. The dependent variable is a dummy variable that takes the value of 1 if the firm is family-owned and 0 otherwise. Firm Size is the log of market capitalization of each firm i in year $t-1$; Market to Book is the ratio of the market value of equity to the book value of equity of each firm i in year $t-1$; Asset Tangibility is the ratio of Plant, Property and Equipment to Total Assets of each firm i in year $t-1$; ROA is the return on assets calculated as the ratio of operating profits to total assets of each firm i in year $t-1$; Unemployment Security is the average gross replacement rate, calculated as the ratio of the unemployment insurance benefits received by a worker in the first two years of unemployment to the worker's last gross in each country of the sample, using the method of Aleksynska and Schindler (2011); Trust Level is measured as fraction of people in a country who state that most people in their country can be trusted and it is obtained from the different waves of the World Values Survey; Family Values is defined as the negative of the weakness of family ties, which in turn is the first principal component of the answers given to three separate questions in the World Value Surveys; Financial Market development is the ratio of stock market capitalization to GDP; Labor Market Tightness is measured as the reciprocal of the ratio of long term unemployment (persisting for one year or longer) to total unemployment (only available for the OECD countries). Robust standard errors are used for each specification to compute T-statistics reported in parenthesis. Asterisks (*and **) indicate statistical significance (at the 10% and 5% level, respectively).

	(1)	(2)	(3)	(4)
Firm Size	-0.2207*** (-5.25)	-0.1982*** (-4.16)	-0.1823*** (-3.82)	-0.1670*** (-3.43)
Market-to-Book ratio	-0.6191*** (-6.81)	-0.5602*** (-5.92)	-0.5154*** (-5.44)	-0.4237*** (-4.29)
Asset Tangibility	0.2283*** (2.93)	0.2026*** (2.78)	0.1972** (2.55)	0.1544** (2.21)
ROA	-0.1091 (-1.52)	-0.0915 (-1.51)	-0.0842 (-1.39)	-0.0607 (-1.15)
Unemployment Security		0.2862* (1.70)	0.1903 (1.32)	0.1202 (0.84)
Trust Level		-0.2107 (-1.52)	-0.1475 (-1.06)	-0.1227 (-0.75)
Family Values		0.1991 (1.42)	0.1394 (0.99)	0.1204 (0.88)
Financial Market Development		-0.2815** (-2.44)	-0.2071* (-1.89)	-0.1843* (-1.73)
Fixed Effects	Country	-	Country	Country-Industry
Year F.E.	Yes	Yes	Yes	Yes
R²	0.21	0.32	0.37	0.42
Number of Observations	124,432	124,432	124,432	124,432

Table A3. Description of the Large Reforms of the Gross Replacement Rate

The table presents information on the 30 events with large reforms in the Gross Replacement Rate (GRR), calculated as the ratio of the unemployment insurance benefits received by a worker in the first two years of unemployment to the worker's last gross earnings. These periods are time intervals centered on large and persistent changes in replacement rates. We define large and persistent reforms as changes in the replacement rate (i) exceeding $\pm 3\%$ in a single year, (ii) not completely reversed in the subsequent 4 years, and (iii) not accompanied by major changes in employment protection legislation, defined as changes in the Employment Protection Legislation (EPL) index exceeding ± 0.5 (the index ranging from 0 to 6) in the subsequent 4 years for OECD countries. The sample also includes large reforms in 6 non-OECD countries where national regulation of workers' dismissal did not undergo significant changes in the year of the large reform in replacement rates and in the subsequent 4 years. We provide information about the average GRR in the five years before the year of the reform (Column 3), the average GRR in the five years after the year of the reform (Column 4), the average EPL in the five years before the year of the reform (Column 5), and the average EPL in the five years after the year of the reform (Column 6). Non-OECD countries are marked with an asterisk (*).

(1) Country	(2) Year of Reform	(3) Average GRR before Reform	(4) Average GRR after Reform	(5) Average EPL before Reform	(6) Average EPL after Reform
Brazil	1993	0.04	0.07	*	*
Canada	1997	0.29	0.23	0.75	0.75
Canada	2005	0.22	0.19	0.75	0.75
Chile	1993	0.02	0.05	*	*
Chile	2002	0.05	0.12	*	*
Denmark	2007	0.51	0.41	1.50	1.50
Finland	1994	0.49	0.44	2.14	2.16
Finland	2002	0.42	0.35	2.07	2.02
France	1999	0.43	0.47	2.98	3.02
Germany	2004	0.33	0.27	2.19	2.12
Greece	2000	0.17	0.21	3.50	3.20
Hong Kong	1994	0.15	0.24	*	*
Hong Kong	2000	0.25	0.13	*	*
Ireland	1994	0.27	0.23	0.93	0.93
Ireland	2008	0.27	0.34	1.11	1.11
Israel	2010	0.15	0.18	*	*
Italy	2008	0.44	0.51	1.89	1.89
Japan	2001	0.15	0.12	1.54	1.44
Korea	1995	0.00	0.13	2.74	2.46
Korea	2002	0.13	0.06	2.03	2.03
Netherlands	2007	0.53	0.50	2.12	1.97
Norway	2002	0.59	0.45	2.64	2.56
Portugal	1999	0.57	0.65	1.40	1.40
South Africa	1995	0.00	0.30	*	*
Switzerland	1993	0.32	0.46	1.14	1.14
Switzerland	1996	0.40	0.53	1.14	1.14
Taiwan	1999	0.00	0.21	*	*
Thailand	2004	0.00	0.13	*	*
Turkey	2000	0.00	0.12	3.75	3.72
United States	2009	0.14	0.33	0.21	0.21

**Table A4. Employment Insurance in Response to Idiosyncratic Shocks:
Controlling for Employment Protection Legislation**

The table presents estimates of a pooled regression for 6,872 firms from 28 countries over the period 1988-2013. The dependent variable is the yearly change in the logarithm of total employment of firm i in year t . Shock is the residual from a first-stage GMM regression estimated with the Arellano-Bond method, whose dependent variable is the first difference of the log of sales of firm i in year t ; Family is a dummy that takes the value of 1 if the firm i 's ultimate blockholder is a family blockholder who is present in the firm's management, and 0 otherwise; Unemployment Security is the gross replacement rate in each country, calculated as the ratio of the unemployment insurance benefits received by a worker in the first two years of unemployment to the worker's last gross earnings; EPL is the employment protection legislation. Firm-level Control Variables are the following: Firm Size is the log of market capitalization of each firm i in year $t-1$; Return on Assets is the return on total assets of each firm i in year $t-1$; Asset Tangibility (the ratio of Plant, Property and Equipment to Total Assets of each firm i in year $t-1$); and Leverage (the ratio of total debt to total assets of each firm i in year $t-1$). The estimates shown in Columns 1-3 and 5 are obtained by estimating the regression on the full sample period. The estimates shown in Column 4 are obtained by estimating the regression on the sample years with negative idiosyncratic shocks. The estimates shown in Column 6 are obtained by estimating the regression on the sample years surrounding large reforms of the gross replacement rate. Bootstrapped standard errors clustered at the country level are used in each specification. T-statistics are reported in parenthesis. Asterisks (*, ** and ***) indicate statistical significance (at the 10%, 5% and 1% level, respectively).

	(1) Full Sample	(2) Full Sample	(3) Negative Shocks	(4) Full Sample	(5) Large Reforms
Shock	0.2611** (2.57)	0.2805** (2.37)	0.3226*** (3.08)	–	–
Shock × Family	-0.2014** (-2.03)	-0.1905* (-1.88)	-0.2145** (-2.04)		
Shock × Unemployment Security	0.0152 (0.87)	-0.0127 (-0.57)	-0.0301 (-0.89)	0.0314 (0.51)	-0.039 (-0.31)
Shock × Family × Unemployment Security	0.1062* (1.91)	0.0881 (1.58)	0.0740* (2.02)	0.2187* (1.85)	0.2330** (2.19)
Family	-0.0035 (-0.61)	0.0023 (0.25)	-0.0029 (-0.38)		
Family × Unemployment Security	0.0012 (0.26)	-0.0041 (-0.35)	-0.0056 (-0.47)	0.0045 (0.24)	-0.0060 (-0.28)
Shock × EPL	-0.0032 (-1.24)	-0.0025 (-0.86)	0.0031 (0.37)	-0.0022 (-0.63)	0.0032 (0.70)
Family × EPL	-0.0026 (-1.37)	-0.0018 (-1.12)	-0.0019 (-0.91)	-0.0014 (-1.05)	0.0011 (1.18)
Shock × Family × EPL	0.0061 (1.02)	0.0042 (0.91)	0.0072 (1.05)	0.0088 (1.19)	0.0071 (1.14)
Firm-Level Controls	Yes	Yes	Yes	Yes	Yes
Firm Fixed Effects	No	Yes	Yes	Yes	Yes
Country × Industry Effects	Yes	No	No	No	No
Country × Time Effects	Yes	Yes	Yes	Yes	Yes
Family × Country Effects	No	No	No	Yes	Yes
Shock × Country Effects	No	No	No	Yes	Yes
Shock × Family × Country Effects	No	No	No	Yes	Yes
R²	0.39	0.46	0.32	0.45	0.42
Number of Observations	109,927	109,927	29,448	109,927	47,587

**Table A5. Employment Insurance in Response to Idiosyncratic Shocks:
Controlling for Labor Market Tightness**

The table presents estimates of a pooled regression for 6,872 firms from 28 countries over the period 1988-2013. The dependent variable is the yearly change in the logarithm of total employment of firm i in year t . Shock is the residual from a first-stage GMM regression estimated with the Arellano-Bond method, whose dependent variable is the first difference of the log of sales of firm i in year t ; Family is a dummy that takes the value of 1 if the firm i 's ultimate blockholder is a family blockholder who is present in the firm's management, and 0 otherwise; Unemployment Security is the gross replacement rate in each country, calculated as the ratio of the unemployment insurance benefits received by a worker in the first two years of unemployment to the worker's last gross earnings; Labor Market Tightness is measured as the reciprocal of the ratio of long term unemployment (persisting for one year or longer) to total unemployment (only for the OECD countries); Firm-level Control Variables are the following: Firm Size is the log of market capitalization of each firm i in year $t-1$; Return on Assets is the return on total assets of each firm i in year $t-1$; Asset Tangibility (the ratio of Plant, Property and Equipment to Total Assets of each firm i in year $t-1$); and Leverage (the ratio of total debt to total assets of each firm i in year $t-1$). The estimates shown in Columns 1-3 and 4 are obtained by estimating the regression on the full sample period. The estimates shown in Column 3 are obtained by estimating the regression on the sample years with negative idiosyncratic shocks. The estimates shown in Column 5 are obtained by estimating the regression on the sample years surrounding large reforms of the gross replacement rate. Bootstrapped standard errors clustered at the country level are used in each specification. T-statistics are reported in parenthesis. Asterisks (*, ** and ***) indicate statistical significance (at the 10%, 5% and 1% level, respectively).

	(1) Full Sample	(2) Full Sample	(3) Negative Shocks	(4) Full Sample	(5) Large Reforms
Shock	0.2586*** (2.65)	0.2338** (2.30)	0.2780** (2.53)		
Shock × Family	-0.2586** (-2.43)	-0.2197** (-2.25)	-0.2318** (-1.98)		
Shock × Unemployment Security	0.0363 (1.10)	0.0220 (0.65)	0.0286 (0.85)	0.0327 (0.53)	0.0401 (0.35)
Shock × Family × Unemployment Security	0.1139** (1.97)	0.1036* (1.83)	0.1039** (2.12)	0.2690** (2.37)	0.3095** (2.58)
Family	-0.0036 (-0.63)	-0.0038 (-0.73)	-0.0046 (-0.77)		
Family × Unemployment Security	0.0012 (0.28)	-0.0040 (-0.33)	-0.0053 (-0.45)	0.0047 (0.26)	0.0058 (0.31)
Shock × Labor Market Tightness	0.0077** (2.17)	0.0065* (1.87)	0.0072* (1.82)	0.0082** (2.31)	0.0088** (2.16)
Family × Labor Market Tightness	0.0016 (1.52)	0.0012 (1.28)	0.0014 (1.22)	0.0017 (1.54)	0.0020* (1.69)
Shock × Family × Labor Market Tightness	0.0269** (1.98)	0.0248* (1.82)	0.0263* (1.70)	0.0213 (1.54)	0.0292* (1.74)
Firm-Level Controls	Yes	Yes	Yes	Yes	Yes
Firm Fixed Effects	No	Yes	Yes	Yes	Yes
Country × Industry Effects	Yes	Yes	No	No	No
Country × Time Effects	Yes	Yes	Yes	Yes	Yes
Family × Country Effects	No	No	No	No	Yes
Shock × Country Effects	No	No	No	No	Yes
Shock × Family × Country Effects	No	No	No	Yes	Yes
R²	0.37	0.38	0.35	0.41	0.37
Number of Observations	109,927	109,927	29,448	109,927	47,587

**Table A6. Employment Insurance in Response to Idiosyncratic Shocks:
The Role of Creditor Rights**

The table presents estimates of a pooled regression model for 6,218 firms from 41 countries over the period 1988-2013. We use the LaPorta et al. (2000) creditor rights index to rank countries based on the strength of the creditor rights and distinguish between countries with high creditor rights (top tercile of the distribution) and those with low creditor rights (bottom tercile of the distribution). We show the specifications using firms in countries with low creditor rights in Columns 1-3 and those in countries with high creditor rights in Columns 4-6. The dependent variable is the yearly change in the logarithm of total employment of firm i in year t . Shock is the residual from a first-stage GMM regression estimated with the Arellano-Bond method, whose dependent variable is the first difference of the log of sales of firm i in year t . The other independent variables are as follows: Family is a dummy that takes the value of 1 if the firm i 's ultimate blockholder is a family blockholder which is present in the firm's management and 0 otherwise; Unemployment Security is the gross replacement rate in each country, calculated as the ratio of the unemployment insurance benefits received by a worker in the first two years of unemployment to the worker's last gross earnings; Firm-level Control Variables are the following: Firm Size is the log of market capitalization of each firm i in year $t-1$; Return on Assets is the return on total assets of each firm i in year $t-1$; Asset Tangibility (the ratio of Plant, Property and Equipment to Total Assets of each firm i in year $t-1$); and Leverage (the ratio of total debt to total assets of each firm i in year $t-1$). The estimates shown in Columns 1, 3, 4 and 6 are obtained by estimating the regression on the full sample period. The estimates shown in Columns 2 and 5 are obtained by estimating the regression on the sample years with negative idiosyncratic shocks. Bootstrapped standard errors clustered at the country level are used in each specification. T-statistics are reported in parenthesis. Asterisks (*, ** and ***) indicate statistical significance (at the 10%, 5% and 1% level, respectively).

	(1)	(2)	(3)	(4)	(5)	(6)
	Low Creditor Rights			High Creditor Rights		
	Full Sample	Negative Shocks	Full Sample	Full Sample	Negative Shocks	Full Sample
Shock	0.3274*** (4.12)	0.3201*** (4.49)		0.2983*** (3.86)	0.3134*** (4.26)	
Shock × Family	-0.3053*** (-3.94)	-0.3174*** (-3.23)		-0.1868** (-2.27)	-0.2149** (-2.59)	
Shock × Unemployment Security	0.0193 (1.38)	0.0314 (1.59)	0.0374 (1.56)	0.0148 (0.99)	0.0273 (1.05)	0.0233 (1.02)
Shock × Family × Unemployment Security	0.2084* (2.59)	0.2224*** (2.79)	0.3486*** (3.63)	0.1389* (1.91)	0.1473** (2.05)	0.2057** (2.29)
Family × Unemployment Security	0.0124 (0.54)			-0.0116 (-0.43)		
	0.0064 (0.62)	0.0068 (0.59)	0.0042 (0.27)	-0.0047 (-0.35)	-0.0037 (-0.31)	-0.0031 (-0.18)
Firm-Level Controls	Yes	Yes	Yes	Yes	Yes	Yes
Firm Fixed Effects	Yes	Yes	Yes	Yes	Yes	Yes
Country × Industry Effects	No	No	No	No	No	No
Country × Time Effects	Yes	Yes	Yes	Yes	Yes	Yes
Family × Country Effects	No	No	Yes	No	No	Yes
Shock × Country Effects	No	No	Yes	No	No	Yes
Shock × Family × Country Effects	No	No	Yes	No	No	Yes
R²	0.22	0.19	0.24	0.25	0.17	0.26
Number of Observations	41,551	11,460	41,551	44,892	12,899	44,892

**Table A7. Employment Insurance in Family and Non-Family Firms
with Age Threshold of 30 Years since Incorporation**

The table presents estimates of a pooled regression for 2,907 firms from 41 countries over the period 1988-2013. Only firms aged at least 30 years since incorporation are included in the sample. The dependent variable is the yearly change in the logarithm of total employment of firm i in year t . Shock is the residual from a first-stage GMM regression estimated with the Arellano-Bond method, whose dependent variable is the first difference of the log of sales of firm i in year t ; Family is a dummy that takes the value of 1 if the firm i 's ultimate blockholder is a family blockholder who is present in the firm's management, and 0 otherwise; Unemployment Security is the gross replacement rate in each country, calculated as the ratio of the unemployment insurance benefits received by a worker in the first two years of unemployment to the worker's last gross earnings; Financial Development is the ratio of stock market capitalization to GDP; Firm-level Control Variables are the following: Firm Size is the log of market capitalization of each firm i in year $t-1$; Return on Assets is the return on total assets of each firm i in year $t-1$; Asset Tangibility (the ratio of Plant, Property and Equipment to Total Assets of each firm i in year $t-1$); and Leverage (the ratio of total debt to total assets of each firm i in year $t-1$). The estimates shown in Columns 1-3 and 5 are obtained by estimating the regression on the full sample period. The estimates shown in Column 4 are obtained by estimating the regression on the sample years with negative idiosyncratic shocks. The estimates shown in Column 6 are obtained by estimating the regression on the sample years surrounding large reforms of the gross replacement rate. Bootstrapped standard errors clustered at the country level are used in each specification. T-statistics are reported in parenthesis. Asterisks (*, ** and ***) indicate statistical significance (at the 10%, 5% and 1% level, respectively).

	(1) Full Sample	(2) Full Sample	(3) Full Sample	(4) Negative Shocks	(5) Full Sample	(6) Large Reforms
Shock	0.2404*** (2.90)	0.2187*** (2.87)	0.2431*** (3.05)	0.2922*** (3.11)		
Shock × Family	-0.2325** (-2.37)	-0.2116** (-2.24)	-0.2344** (-2.19)	-0.2807** (-2.49)		
Shock × Unemployment Security	0.0417* (1.51)	0.0399 (1.47)	0.0296 (1.21)	-0.0206 (-1.22)	-0.0251 (-1.10)	-0.0192 (-0.98)
Shock × Family × Unemployment Security	0.1414** (2.45)	0.1302** (2.31)	0.1561** (2.42)	0.1871** (2.49)	0.2837*** (2.71)	0.2431*** (2.84)
Family	-0.0151 (-0.46)	-0.0162 (-0.50)	-0.0149 (-0.48)			
Family × Unemployment Security	-0.0028 (-0.10)	-0.0014 (-0.20)	-0.0016 (-0.19)	-0.0024 (-0.18)	-0.0039 (-0.25)	-0.0034 (-0.24)
Shock × Financial Development		0.0020 (1.61)				
Family × Financial Development		0.0009 (0.29)				
Shock × Family × Fin. Development		-0.0035* (-1.71)				
Firm-Level Controls	Yes	Yes	Yes	Yes	Yes	Yes
Firm Fixed Effects	No	No	Yes	Yes	Yes	Yes
Country × Industry Effects	Yes	Yes	No	No	No	No
Country × Time Effects	Yes	Yes	Yes	Yes	Yes	Yes
Family × Country Effects	No	No	No	No	Yes	Yes
Shock × Country Effects	No	No	No	No	Yes	Yes
Shock × Family × Country Effects	No	No	No	No	Yes	Yes
R²	0.41	0.42	0.37	0.35	0.49	0.49
Number of Observations	71,209	71,209	71,209	21,088	71,209	26,844

Table A8. Descriptive Statistics of the Matched Sample

The table presents the mean and median values of the firm-level financial variables for family and non-family firms in the matched sample. Family firms are matched with non-family firms with the closest stock market capitalization and cash flow volatility from the same country and industry. Total Assets and Market Capitalization are in millions of US dollars; Capital expenditure is the ratio of capital expenditure to (lagged) total assets; Profitability is the ratio of operating profits to total assets; Leverage is the ratio of total debt to total assets; Market to Book is the ratio of the market value of equity to the book value of equity; Asset Tangibility is the ratio of plant, property and equipment to total assets; and Beta is the correlation of the firm's with the local stock market's returns. Asterisks (*, and **) indicate statistical significance (at the 10% and 5% level, respectively) of the difference in the average values between family and non-family firms.

	Family Firms		Non-Family Firms	
	Mean	Median	Mean	Median
Total Assets	1.805	372	1.891	395
Market Capitalization	2.445	432	2.728	462
Capital Investments	0.069	0.061	0.072	0.064
Profitability	0.058	0.067	0.064	0.070
Leverage	0.267*	0.234	0.216	0.201
Market to Book ratio	1.428	1.326	1.492	1.397
Asset Tangibility	0.490	0.426	0.475	0.397
Beta	0.972	0.887	1.022	0.918

Appendix B: Estimating the persistent and transitory components of sales shocks

This appendix shows how the persistent and transitory components of sales shocks are obtained, disregarding – initially – the cross-country component and also the distinction between family and non-family firms.

We assume the following stochastic process for firm sales:

$$s_{it} = \mu_i + \mu_{cjt} + \lambda X_{it} + \varepsilon_{it}, \quad (4)$$

where s_{it} is the logarithm of the sales of firm i in industry j in year t , μ_i is a firm fixed effect, μ_{cjt} is a country-industry-year dummy, X_{it} are other controls and ε_{it} is a shock to firm i 's sales, which we can decompose into a persistent and a transitory component as follows:

$$\varepsilon_{it} = \zeta_{it} + v_{it}, \quad (5)$$

$$\zeta_{it} = \zeta_{it-1} + u_{it}, \quad (6)$$

where ζ_{it} is the persistent component, modeled as a random walk, and v_{it} the transitory component of sales innovations. This is a simpler version of Guiso, Pistaferri and Schivardi (2005), where s_{it} and v_{it} are respectively modeled as AR(1) and MA(1) processes.

Employment is assumed to respond to persistent and transitory shocks with different sensitivities α and β :

$$n_{it} = \mu_i + \alpha \zeta_{it} + \beta v_{it} + \gamma W_{it} + \psi_{it}, \quad (7)$$

where μ_i is a firm fixed effect, W_{it} are other controls, and ψ_{it} is an idiosyncratic shock to employment uncorrelated with ζ_{it} and v_{it} .

Sensitivities α and β are estimated in three steps. First, the first differences of (4) are computed and the resulting sales growth regression is estimated:

$$\Delta s_{it} = \Delta \mu_{jct} + \lambda \Delta X_{it} + \Delta \varepsilon_{it}, \quad (8)$$

so as to recover an estimate of $\Delta\varepsilon_{it}$, without directly identifying the persistent and the transitory shocks. Second, the first differences of (7) are computed and the resulting employment growth regression is estimated:

$$\Delta n_{it} = \gamma\Delta W_{it} + \alpha u_{it} + \beta\Delta v_{it} + \Delta\psi_{it} = \gamma\Delta W_{it} + \Delta\omega_{it}, \quad (9)$$

using $\Delta\zeta_{it} = u_{it}$ from (6), and re-defining the error term as $\Delta\omega_{it} \equiv \alpha u_{it} + \beta\Delta v_{it} + \Delta\psi_{it}$.

Finally, since $\Delta\varepsilon_{it} = u_{it} + \Delta v_{it}$, the coefficients α and β are recovered by estimating two separate IV regressions of $\Delta\omega_{it}$ on $\Delta\varepsilon_{it}$. Specifically, as shown by Guiso, Pistaferri and Schivardi (2005), a regression of $\Delta\omega_{it}$ on $\Delta\varepsilon_{it}$ with the latter instrumented by $\Delta\varepsilon_{it+1}$ and its powers identifies the transitory shock coefficient β , while a regression of $\Delta\omega_{it}$ on $\Delta\varepsilon_{it}$ with the latter instrumented by $\Delta\varepsilon_{it+1} + \Delta\varepsilon_{it} + \Delta\varepsilon_{it-1}$ and its powers identifies the persistent shock coefficient α . We use the first three powers of the instruments, which gives us two over-identifying restrictions for each equation. We test for the power of the instruments in the reduced-form regressions with the p -value of the F -test on the excluded instruments.

To estimate a different coefficient for family firms, we just include in the regression the interaction between the family-firm dummy F_i and the shocks, and, among the instruments, the interaction between the original instruments just described and the F_i dummy.

about ECGI

The European Corporate Governance Institute has been established to improve *corporate governance through fostering independent scientific research and related activities*.

The ECGI will produce and disseminate high quality research while remaining close to the concerns and interests of corporate, financial and public policy makers. It will draw on the expertise of scholars from numerous countries and bring together a critical mass of expertise and interest to bear on this important subject.

The views expressed in this working paper are those of the authors, not those of the ECGI or its members.

ECGI Working Paper Series in Finance

Editorial Board

Editor	Ernst Maug, Professor for Corporate Finance, Mannheim Business School, University of Mannheim
Consulting Editors	Franklin Allen, Nippon Life Professor of Finance and Economics, The Wharton School, University of Pennsylvania Julian Franks, Professor of Finance, London Business School Marco Pagano, Professor of Economics, Facoltà di Economia Università di Napoli Federico II Xavier Vives, Professor of Economics and Financial Management, IESE Business School, University of Navarra Luigi Zingales, Robert C. McCormack Professor of Entrepreneurship and Finance, University of Chicago, Booth School of Business
Editorial Assistants :	Tamas Barko, University of Mannheim Julia Keith, University of Mannheim

Electronic Access to the Working Paper Series

The full set of ECGI working papers can be accessed through the Institute's Web-site (www.ecgi.org/wp) or SSRN:

Finance Paper Series	http://www.ssrn.com/link/ECGI-Finance.html
-----------------------------	---

Law Paper Series	http://www.ssrn.com/link/ECGI-Law.html
-------------------------	---